

# Ovilus X

## *USER'S and Software MANUAL*



Version 1.0  
by  
Digital Dowsing LLC.

[www.DigitalDowsing.com](http://www.DigitalDowsing.com)

Copyright ©2006 -2012

# **Ovilus** is a REGISTERD Trademark of Chapp INC,

All Ovilus Firmware and Software is protected under the US Copyright 2006

This manual may not be redistributed or reproduced in ANY manner with out  
Express written consent of Chapp Inc., and Digital Dowsing LLC.,

## **TABLE OF CONTENTS**

Disclaimers and Licensing .....	4
Disclaimer of Liability, HTML Compatibility, Endorsement or Product Use.....	5
Supplemental Software License .....	6
Safety.....	7
About Ovilus X from the inventor .....	7
Intended Use.....	8
Theory of operation.....	8
About this device.....	9
Hardware.....	9
Installing Software.....	13
Using The Ovilus X Program .....	22
Quality and service.....	45

## **Disclaimers and Licensing**

The Ovilus X is sold as an entertainment device only. We make no claim to the validity of the data received by this device.

As the owner of this device you are responsible for the devices use. Further you are responsible for the safety of others who may come in contact with this device.

This device can generate disturbing text and speech; children under the age of 18 should not use it. Further this device should not be used by anyone with a history of mental illness.

By pressing the accept button on the software you are agreeing to the preceding statement. You agree not to expose children to this device, or any person who maybe Harmed or damaged by exposure to this device. Further you state that you are over 18 and are in sound mental condition.



## **Disclaimer of Liability, HTML Compatibility, Endorsement or Product Use**

WHILE EVERY EFFORT IS MADE TO ENSURE THE TIMELINESS AND ACCURACY OF THE INFORMATION, DOCUMENTS, DATA, MATERIAL OR SOFTWARE (THE "INFORMATION") AVAILABLE ON [Digitaldowsing.com](http://Digitaldowsing.com) IN WRITTEN OR ELECTRONIC FORM, Digital Dowsing LLC. and CHAPP INC. ASSUMES NO LEGAL LIABILITY OR RESPONSIBILITY FOR THE COMPLETENESS, ACCURACY OR USEFULNESS OF ANY OF THE INFORMATION DISCLOSED. INFORMATION (INCLUDING ANY REVISIONS AND UPDATES) AND MATERIALS ARE PROVIDED SOLELY FOR THE USER'S INFORMATION AND IS PROVIDED STRICTLY "AS IS." CHAPP INC. AND CHAPP.COM MAKE NO REPRESENTATION OR WARRANTY, EXPRESS OR IMPLIED, IN RESPECT TO THE INFORMATION, SOFTWARE, FIRMWARE OR HARDWARE EITHER ACCESSED VIA [www.chapp.com](http://www.chapp.com) or [www.digitaldowsing.com](http://www.digitaldowsing.com) THAT MAY BE ACCESSED THROUGH THIS SITE BY WAY OF LINKS TO OTHER SITES, OR RECEIVED FROM CHAPP INC. OR IT'S AGENTS INCLUDING AND WITHOUT LIMITATION, AS TO:

- a. THE ACCURACY, ADEQUACY, COMPLETENESS OR RELIABILITY OF ANY INFORMATION HOWSOEVER STORED OR TRANSMITTED, WHICH MAY BE OBTAINED BY ANY PERSON OR ANY ENTITY HAVING ACCESS TO THIS SITE; OR
- b. THE MERCHANTABILITY OR FITNESS FOR A PARTICULAR PURPOSE OR USE WITH RESPECT TO ANY INFORMATION WHATSOEVER INCLUDED IN THIS SITE OR THAT MAY BE ACCESSED THROUGH THIS SITE; OR
- c. THE RESULTS TO BE OBTAINED FROM USING SUCH INFORMATION.

USERS SHOULD ALSO NOTE THAT THE CHAPP INC. AND Digital Dowsing LLC, DO NOT ASSUME ANY RESPONSIBILITY FOR THE QUALITY OF PRODUCTS OR SERVICES LISTED OR DESCRIBED IN THIS MANUAL. NOR DO WE ENSURE COMPATIBILITY WITH PAST, CURRENT OR FUTURE VERSIONS OF SOFTWARE OR HARDWARE.

CHAPP INC. AND DIGITALDOWSING LLC ASSUME NO RESPONSIBILITY FOR ANY DISCREPANCIES THAT MAY HAVE BEEN TRANSMITTED WITH THE PRINTED OR ELECTRONIC VERSION OF THIS MANUAL, CONTROLLER OR SOFTWARE.

WHILE EVERY EFFORT IS MADE TO ENSURE THE ACCURACY OF ALL INFORMATION PROVIDED IN THIS MANUAL, AND THAT SOFTWARE DOES NOT CONTAIN COMPUTER VIRUSES, THE USER SHOULD TAKE REASONABLE AND APPROPRIATE PRECAUTIONS TO SCAN FOR COMPUTER VIRUSES AND SHOULD ENSURE A COMPLETE AND CURRENT BACKUP OF THE APPLICABLE ITEMS OF INFORMATION CONTAINED ON THE USER'S COMPUTER SYSTEM. THE USER SHOULD PAY SPECIFIC ATTENTION TO SOME OF THE NEWER VIRUSES THAT HAVE BEEN WRITTEN TO AUTOMATICALLY EXECUTE WHEN AN INFECTED DOCUMENT IS LOADED INTO CERTAIN WORD PROCESSING PROGRAMS.

LINKS TO DIGITAL DOWSING AND CHAPP.COM ARE PROVIDED SOLELY FOR THE CONVENIENCE OF THE USERS AND DO NOT CONSTITUTE AN ENDORSEMENT OF THOSE PARTIES OR ANY REPRESENTATION AS TO THE ACCURACY, COMPLETENESS OR USEFULNESS OF THE INFORMATION SUPPLIED BY THEM. CHAPP INC. AND CHAPP.COM ASSUME NO RESPONSIBILITY FOR ACTS, ERRORS, OR OMISSIONS BY OFF-SITE PARTIES OR THE INFORMATION OR MATERIALS SUPPLIED BY THEM.

THE OWNERS OF CHAPP INC., CHAPP.COM, DIGITAL DOWSING LLC, DIGITALDOWSING.COM OR ITS AGENTS, EMPLOYEES AND CONTRACTORS WILL NOT BE LIABLE TO ANY PERSON OR ENTITY HAVING ACCESS TO THIS SOFTWARE, WEBSITES OR HARDWARE FOR ANY DAMAGES OF ANY KIND WHETHER DIRECT, INDIRECT, SPECIAL, INCIDENTAL OR CONSEQUENTIAL, OR LOST PROFITS OR DATA, OR HARM TO PERSONS (INCLUDING DEATH), HOWSOEVER CAUSED, WHETHER ARISING OUT OF NEGLIGENCE OR OTHERWISE, WHICH MAY BE OCCASIONED FROM THE USE OF THIS SOFTWARE, HARDWARE, FIRMWARE OR WEBSITE INFORMATION OR THE POSSIBILITY HEREOF.

BY USING THIS CONTROLLER OR INSTALLING THIS SOFTWARE, YOU ARE AGREEING TO BE BOUND BY THE TERMS AND CONDITIONS SET OUT HEREIN AND ALL APPLICABLE LAWS AND REGULATIONS. IF YOU DO NOT AGREE WITH ANY OF THESE TERMS, DO NOT USE THIS PRODUCT. RETURN IT FOR A FULL REFUND LESS SHIPPING COST.

## **Supplemental Software License**

THE SOFTWARE PROGRAM IS PROVIDED TO INTERESTED PARTIES AT NO COST.

THE USE OF THE SOFTWARE PROGRAM IS GOVERNED BY THE FOLLOWING LEGAL AGREEMENT. THE PURPOSE OF THE AGREEMENT IS TO ENSURE THAT ALL USERS ARE TREATED EQUITABLY, AND WE ARE NOT DISADVANTAGED IN ANY WAY BY PROVIDING THE SOFTWARE. ALL USE OF THIS SOFTWARE IS CONDITIONAL UPON YOUR COMPLIANCE WITH THE LICENSE TERMS THAT FOLLOW. IF YOU DO NOT AGREE TO THE TERMS OF THIS LICENSE AGREEMENT, OR DO NOT COMPLY WITH THE TERMS AND CONDITIONS OF THIS AGREEMENT, YOU ARE NOT PERMITTED TO USE THIS SOFTWARE AND ARE REQUIRED TO REMOVE THE PROGRAM FROM YOUR COMPUTER SYSTEM, AND DESTROY ALL COPIES OF THE SOFTWARE. THE USE OF THE SOFTWARE PROGRAM CONSTITUTES YOUR AGREEMENT TO ABIDE BY THE TERMS AND CONDITIONS SET OUT IN THIS DOCUMENT.

PROGRAM, HEREIN CALLED THE "SOFTWARE", IS OWNED BY CHAPP, INC. DIGITAL DOWSING LLC. AND IS PROTECTED BY UNITED STATES COPYRIGHT LAWS. UPON YOUR AGREEMENT TO AND COMPLIANCE WITH THE TERMS OF THIS LICENSE AGREEMENT, DIGITAL DOWSING LLC. GRANTS YOU, HEREIN CALLED THE "LICENSEE", THE FOLLOWING NON-TRANSFERABLE, NON-EXCLUSIVE RIGHTS OF USE. THE MERCURY GROUP HAS THE RIGHT TO TERMINATE THIS AGREEMENT IF THE "LICENSEE" FAILS TO COMPLY WITH ANY TERM OR CONDITION OF THIS AGREEMENT. NO TITLE TO THE INTELLECTUAL PROPERTY IN THE "SOFTWARE" IS TRANSFERRED TO YOU. THE "LICENSEE" DOES NOT ACQUIRE ANY RIGHTS TO THE "SOFTWARE" EXCEPT AS EXPRESSLY SET FORTH IN THIS LICENSE.

### **GRANT OF LICENSE REGARDING Software**

CHAPP, INC. GRANTS THE "LICENSEE" THE FOLLOWING RIGHTS REGARDING THE USE OF THE "SOFTWARE":

- 1) USE OF THE "SOFTWARE" FOR THE "LICENSEE'S" PERSONAL PURPOSES.
- 2) COPYING THE "SOFTWARE"
  - i) THE "LICENSEE" MAY NOT MAKE COPIES OF THE "SOFTWARE" OTHER THAN THOSE GRANTED BY LAW FOR ARCHIVAL OR BACKUP PURPOSES.
  - ii) THE "SOFTWARE" MAY BE TRANSFERRED TO THE HARD DISK OF ANY COMPUTER, OR NETWORK OF COMPUTERS, BELONGING TO THE "LICENSEE".
- 3) RESTRICTIONS REGARDING Software  
THE "LICENSEE" MAY NOT DISTRIBUTE, SUBLICENSE, LEASE, SELL, RENT OR OTHERWISE TRANSFER THE "SOFTWARE", OR ANY MODIFICATION OR DERIVATIVE THEREOF, TO ANY OTHER INDIVIDUAL OR GROUP FOR ANY REASON.

### **LIMITATIONS OF LIABILITY AND DISCLAIMER OF WARRANTY**

THERE ARE NO WARRANTY RIGHTS GRANTED TO YOU, THE "LICENSEE", REGARDING THE "SOFTWARE". THE "SOFTWARE" AND ACCOMPANYING WRITTEN MATERIALS ARE SUPPLIED TO THE "LICENSEE" "AS IS" WITHOUT WARRANTY OF ANY KIND. Chapp Inc. DOES NOT GUARANTEE, WARRANT, OR MAKE ANY REPRESENTATIONS, EITHER EXPRESSED OR IMPLIED, REGARDING THE USE, OR THE RESULTS OF THE USE OF THE "SOFTWARE", CONTROLLERS OR THE WRITTEN MATERIALS WITH REGARDS TO RELIABILITY, ACCURACY, CORRECTNESS, OR OTHERWISE. THE "LICENSEE" ASSUMES THE ENTIRE RISK AS TO THE RESULTS AND PERFORMANCE OF THE "SOFTWARE".

DIGITAL DOWSING LLC. , CHAPP INC. SHALL NOT BE LIABLE UNDER ANY CIRCUMSTANCES, FOR ANY DAMAGES WHATSOEVER, ARISING OUT OF THE USE, OR THE INABILITY TO USE, THE "SOFTWARE", FIRMWARE OR HARDWARE, EVEN IF CHAPP INC. OR DIGITAL DOWSING LLC. HAS BEEN ADVISED OF THE POSSIBILITY OF SUCH DAMAGES.

# Safety

NEVER not allow children to operate this device!

## About The Ovilus X from the inventor:

What is the Ovilus X ? and why do we say for entertainment use only?

Let's take this issue head on:

First and foremost the Ovilus X is designed to aid in Paranormal Research.

The Ovilus uses what we call ECM "Environmental Communications Modes"

Some of our devices can create speech and text in this mode. So what is ECM? A method of taking energy levels in the environment and creating speech nothing more! We make no claim as to Spirit communications, Aliens, Ghosts or any other type of phenomena. Devices with this mode should be considered "For Entertainment" why? Because there's no person who can prove to a certainty what these messages are. Further people need to take a rational grounded approach to any device that creates speech or text. The power of suggestion is very strong!

For the record, our devices do not use any type of random generator or sweep function. No algorithm is employed to produce text or speech in a specific pattern.

Remember the odds of this device saying a word that contextually correct is 1 in 2000  
And in the units with phonetic speech the odds are only 1 in 71

**A lot of claims have been made about devices such as this. Simple math will tell you  
The odd's are much better than you think! That it's just coincidence and nothing more.**

Sincerely,  
Bill Chappell  
Digital Dowsing LLC  
Chapp Inc.

# Intended Use

1. These items are provided for adults over the age of 18 years.
2. Software, Hardware, Firmware are not intended for unsupervised use or unattended use.
3. For hobby or personal experimentation.
4. User has read and understands the Disclaimer, Software license and the manual before attempting any use of this product or associated devices.

## Theory of Operation:

Let's start with what the Ovilus X does. The Ovilus X has 3 on Antenna:

1. Channel A (+Channel )
2. Channel B (- Channel )
3. Channel C (+Or - Channel )

The Ovilus samples Channels A , B & C returning a summed value.

The values create ECM modes input

.

ECM "Environmental Communications Modes" The software does not interrupt user input Nor make decisions beyond a basic limit filter. The only functional mode of this device that

Speech is a simple 1 to 1 match of a level from the Channel input to a word in the dictionary list. The only filters are as follows. Every sample an average is calculated. Each new value is compared to the average. If the value is within the average plus or minus the "Offset" The value is rejected.

The second filter is a repeat word buffer designed to prevent the same word from being Repeated.

So why filter, the unit senses the environment. If the energy levels are flat "un changing" The unit would simply repeat over and over the same words.



# The Ovilus X User Guide

## About This Device

### Hardware:

Your Ovilus X is designed to work with standalone or connected most windows based PC's running ME,2000 or XP (Home or Professional) Vista and Windows 7 is supported.



## Operating the Ovilus X

**The Power Switch** is on the End of the Ovilus X

Slide it Up toward the top of the unit to turn on.

Slide it Down toward the back to turn off.

The Ovilus X will announce the current mode it is in .

To change modes press the Mode switch on the front .

Note: when changing modes hold the mode button down till

the Ovilus X begins to announce the next mode.

### **Baterries :**

The Ovilus X has a Battery Door on the Back of the device



### **Please Note:**

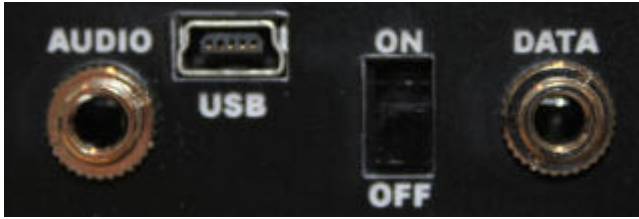
The Ovilus X requires 3 AAA Batteries Note the+/- when installing

### **Using Ovilus X**

Questions About the Ovilus X here's a special Email address just for Ovilus X users [OVX@DigitalDowsing.com](mailto:OVX@DigitalDowsing.com).

This site will be the source for upgrades " You can download ! " for the Ovilus X. The Upgrade feature is the single biggest asset of this device. allowing us to make adjustments and updates via the Internet.

The Ovilus X is a new class of device, yes it is an ITC device. The Ovilus X is also a hand held computer with I/O and Interface capabilities. The Ovilus X will grow with time as we add new firmware and external devices.



Ovilus X Ports.

**USB:**

For PC communication to the Ovilus X

**DATA:**

For External devices and expansion

**AUDIO:**

For head phones or recording devices

Please Note: The Ovilus X requires 3 AAA Batteries Note the +/- when installing

Operating the Ovilus X

The Power Switch is on the End of the Ovilus X

Slide it Up toward the top of the unit to turn on.

Slide it Down toward the back to turn off.

The Ovilus X will announce the current mode it is in .

To change modes press the Mode switch on the front .

Note: when changing modes hold the mode button down till the Ovilus X begins to announce the next mode.

The Ovilus X modes

**Mode 1: Dictionary Mode**

Words are created out of the on board data base

**Mode 2: Phonetic Mode**

Speech is formed by using phonemes, the basic blocks Of human speech.

**Mode 3: Reverse Phonetic Mode**

Speech is formed by using phonemes, the basic blocks Of human speech. Then played in reverse order.

**Mode 4: Touch Mode**

The Ovilus X will make a ping sound when touched

**Mode 5: Energy Mode**

Energy Mode produces a small EMF output "EM Pump"

**Mode 6: White Noise Mode**

Creates a low volume White noise for EVP sessions

**Mode 7: Say Last Word Said**

The Ovilus will say all the words, it has spoken in Mode 1

**Mode 8: Sync Mode**

The Ovilus will count down from ten and flash the panel lights

Mode Use:

**Dictionary Mode:**

ITC, the Idea is very simple as the Ovilus senses energy changes it calculates a value. that value is used to look up a pre-programmed word. if the "value" is 100 the 100th word is spoken. This 1 to 1 correlation never changes. the Ovilus X in it's present form hold 2048 words in it's data base. These words may be change by the user by creating new words and uploading them using the Ovilus X software. The entire data base is written phonetically allowing the user to create any word in most any language. See the Software Section for details.

While in this mode you may hear a small popping sound this is the internal amplifier being turned on and off to save battery life.

**Phonetic Mode:** Creates speech using only the building blocks of speech no programmed words This is the most "talkative" mode on the Ovilus X most of time you will hear vowel and constant sounds in jumbled order. The device is still being driven by the environment. No random generator is ever used. Here's an example of phonetic speech from the first version of built by Bill Chappell ["Billy"](#)

**Reverse Phonetic:** Mode: Creates speech like mode 2 only the phonemes are replayed in reverse sequence

**Touch Mode:**

Creates an monitored energy level when the level increase the device will "ping" like sonar. This mode is best used by setting the Ovilus X on a table or the floor. allow several minutes for the device to stabilize.

**Energy Mode:**

This mode creates a small "3-5" mg EM pulse the pulse from approximately 3 to 5 inches away. The idea is not some much "energy" rather a beacon . Use this mode in conjunction with EVP sessions.

**White Noise:**

Creates a low volume white noise.

Use this mode during EVP sessions the low level white noise.

Say Last Word Said: This Mode will repeat all words spoken in mode 1 up-to 500 words starting with the last word spoken.

### **Sync Mode:**

This Mode is designed to help "Sync" your video and audio devices for an investigation the Mode will flash the panel lights then count down from ten to zero. This is very help full when setting up an investigation by placing the Ovilus X in an area where your static camera's can see it and audio recorders can hear it. You can quickly match your audio and video files based on the "sync" at the end of the "Sync" after the sync mode has finished the Ovilus X will return to dictionary mode.

\*\* Software must be downloaded online [www.digitaldowsing.com/ovx](http://www.digitaldowsing.com/ovx)

The Software will allow you to make changes to the Ovilus X voice. Volume and functions. Including changing the words the Ovilus X says.

Installing the Software:

Hopefully! Your reading this manual before you install your software!

Make Sure you have a **Complete Backup** of your system before installing software!

If your system is backed up, and you have done a current update for Windows.

**Do not plug in the Ovilus until all the software has been loaded!**

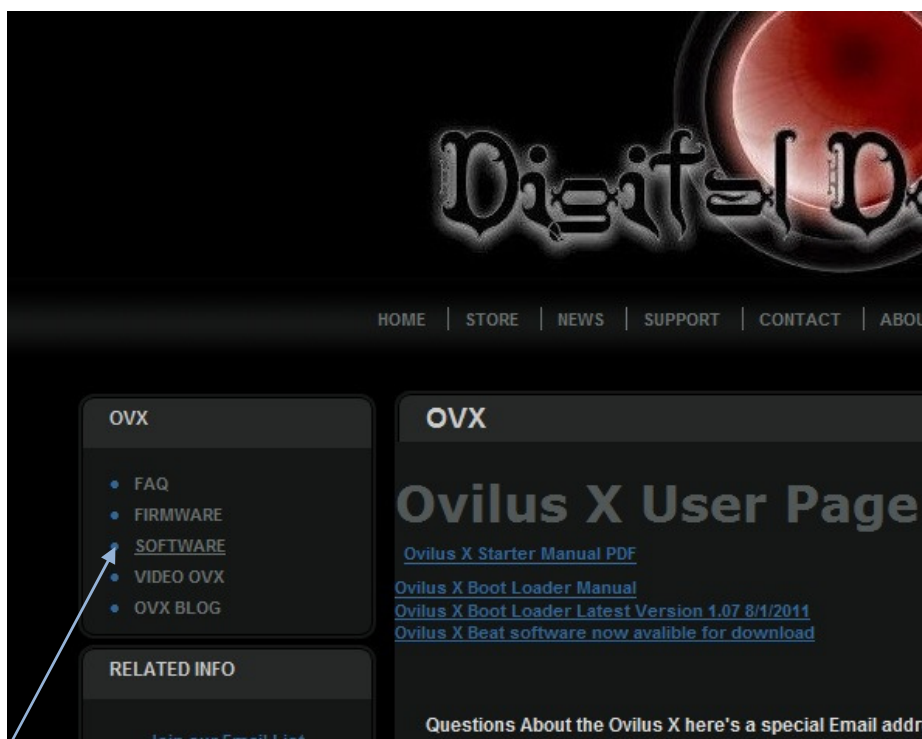
### **Installing the Ovilus X software from the web.**

Installing the Ovilus X software:

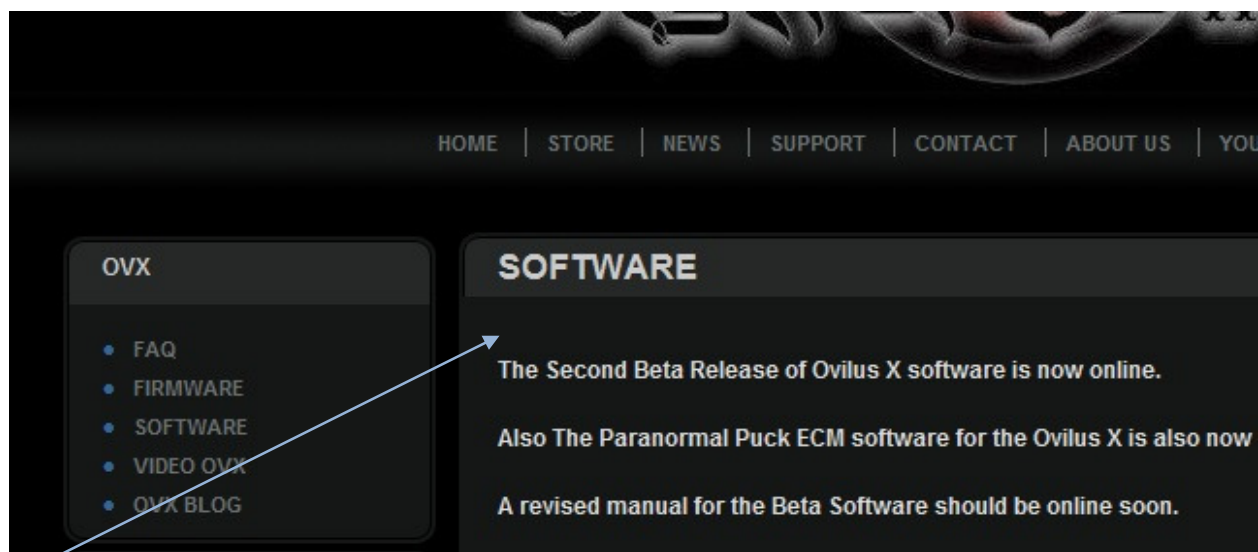
All the examples are shown using (Windows 7 tm ) Professional 64 bit edition.

Always use windows Explorer "IE" not Firefox or Mozilla for the install

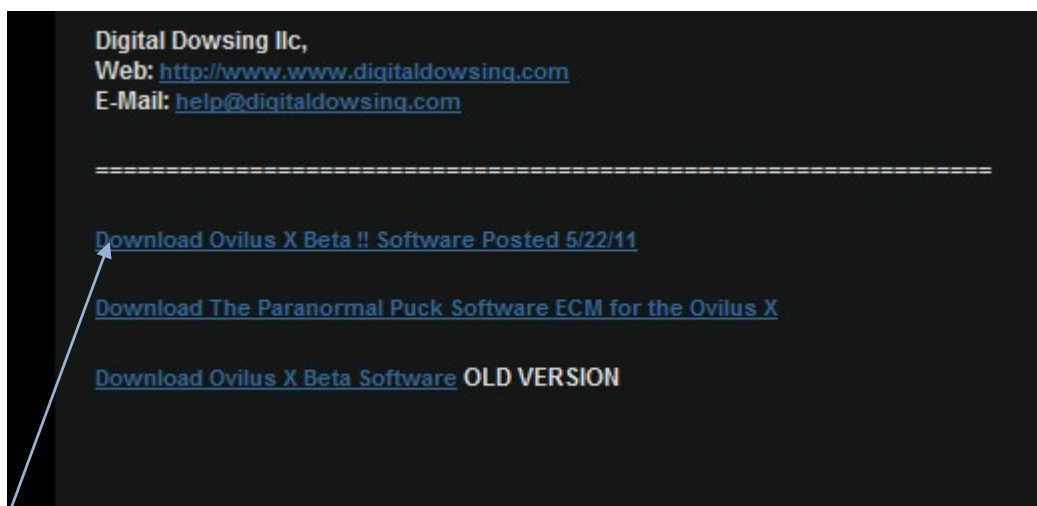
Begin by going to [www.digitaldowsing.com/ovx](http://www.digitaldowsing.com/ovx)



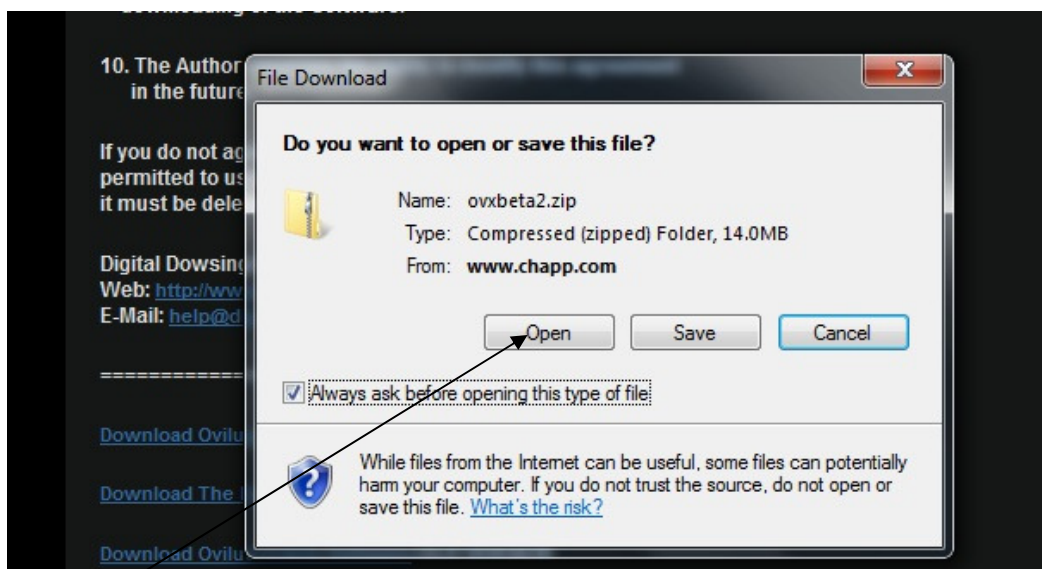
Select software from the upper left of the screen



Next read the disclaimer and software license and scroll to the bottom of the page



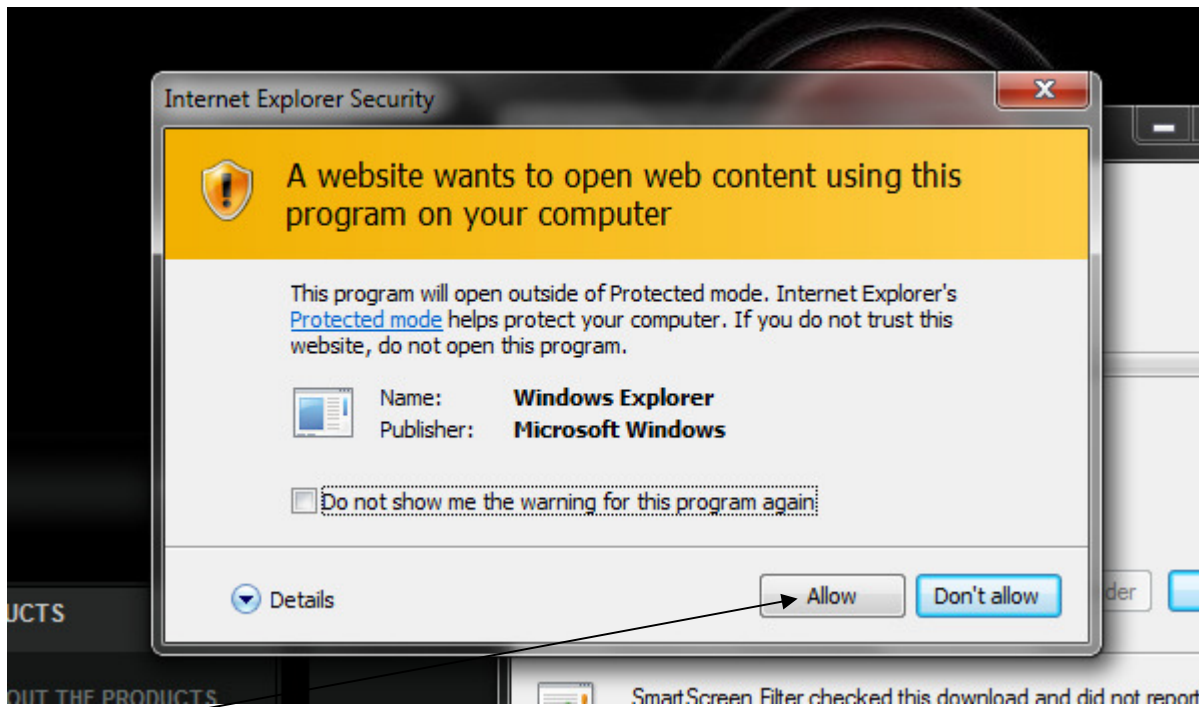
Click on the Latest Software version for the Ovilus X for the Windows Operating System



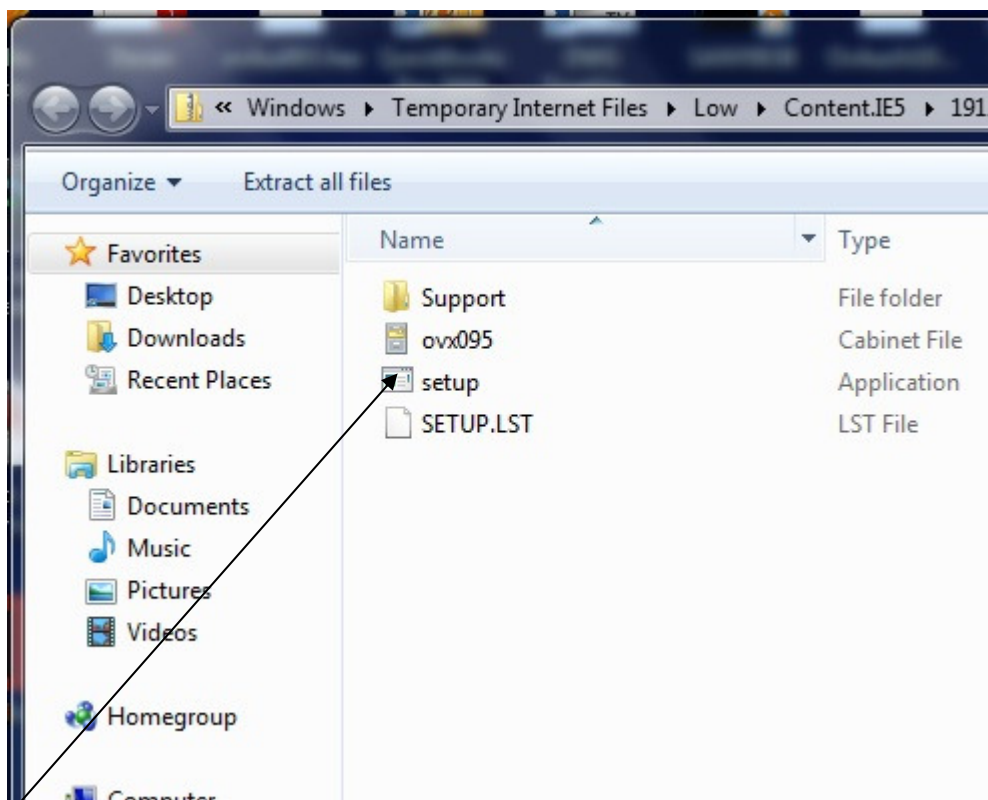
When The File Download appears click on “ Open ”

Depending on the speed of you internet connection a long pause may occur





You may see a security warning : Allow this operation to continue



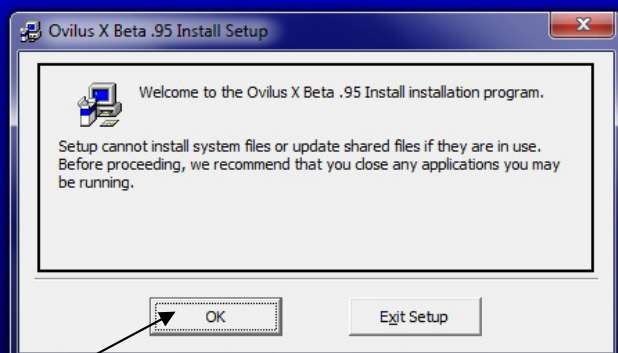
Windows will open a temporary file folder : To start the installation of the software double click on setup

Copyright 2006 - 2012 Digital Dowsing LLC.. All rights reserved.

This manual May NOT be reprinted, transmitted, reproduced or displayed without written consent of Chapp Inc., or Digital Dowsing LLC.

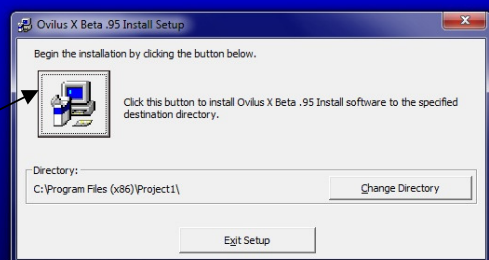


## ***Ovilus X Beta .95 Install Setup***

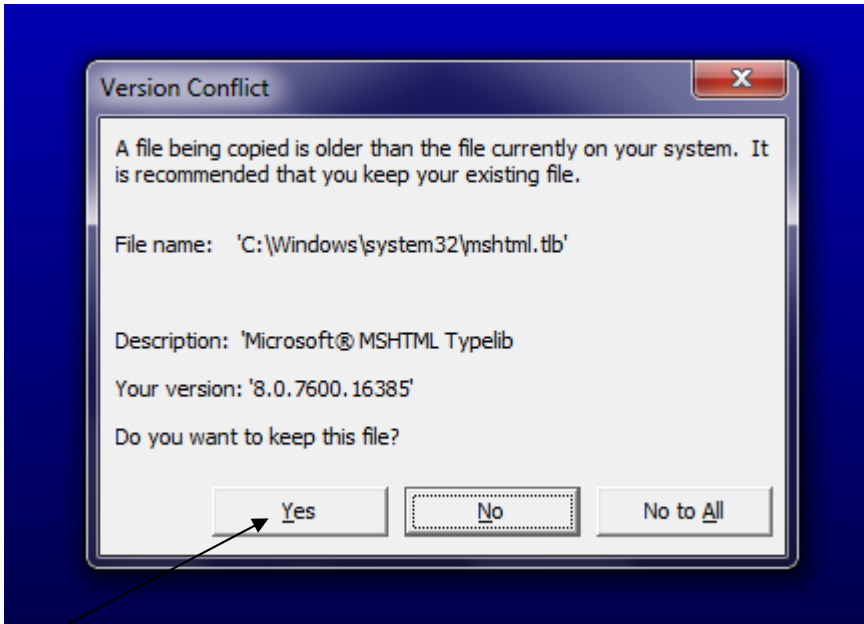


Select OK from this screen to begin the software install

## ***Ovilus X Beta .95 Install Setup***



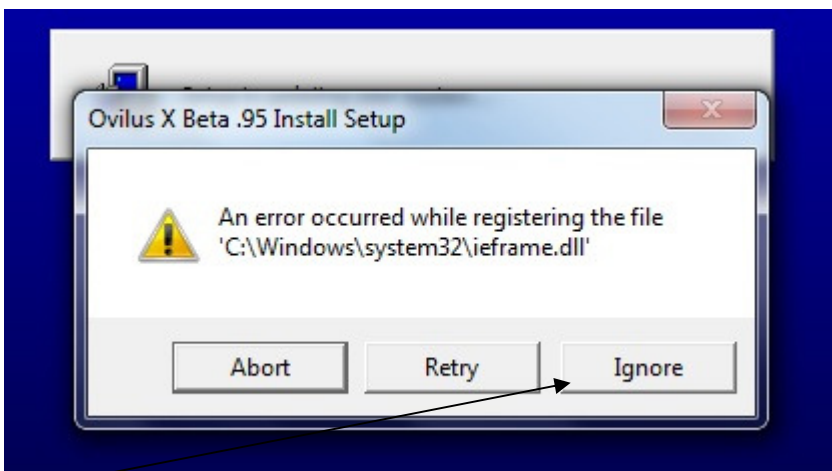
The software is now asking where to install the program click on the computer icon



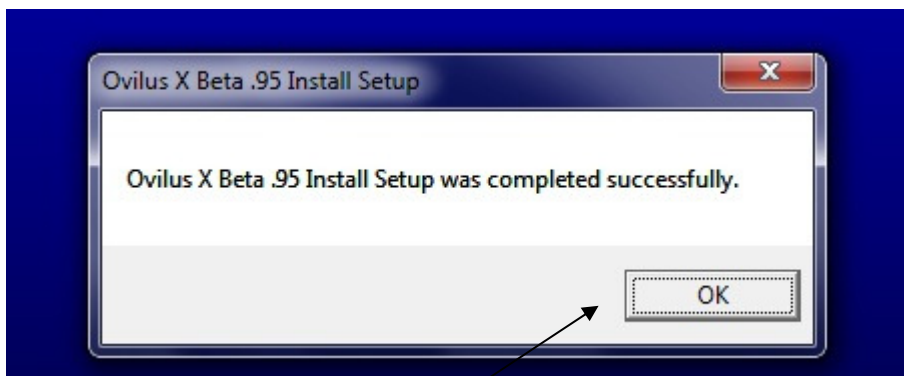
Never over write files select yes to keep existing files , this will occur because of different versions of windows

Or updates. Keeping you existing file is ALWAYS the right choice. This will not affect the program.

You may see this error two or three times during an install.

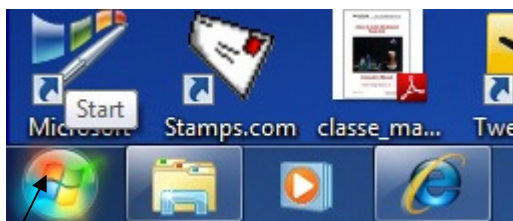


If you see this error it is because the version of Internet explorer is newer on your machine than the Program. IGNORE this error if you receive it.

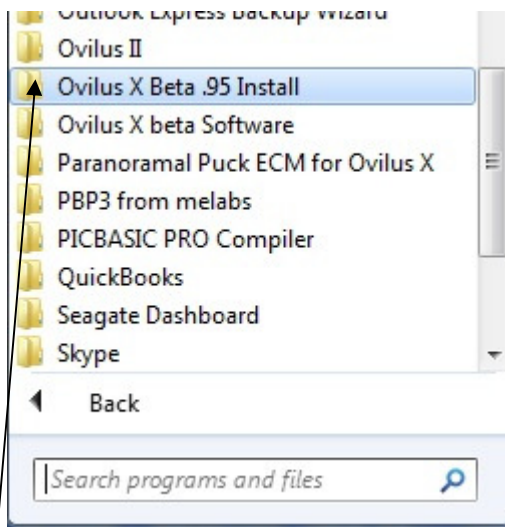


Select "OK " to complete the install

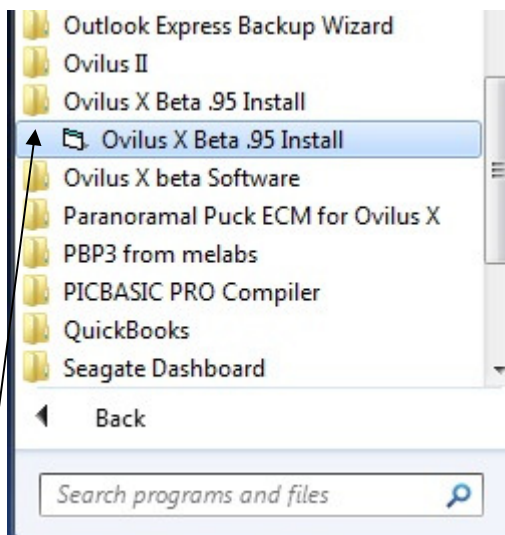
Your Software is now installed and ready to use.



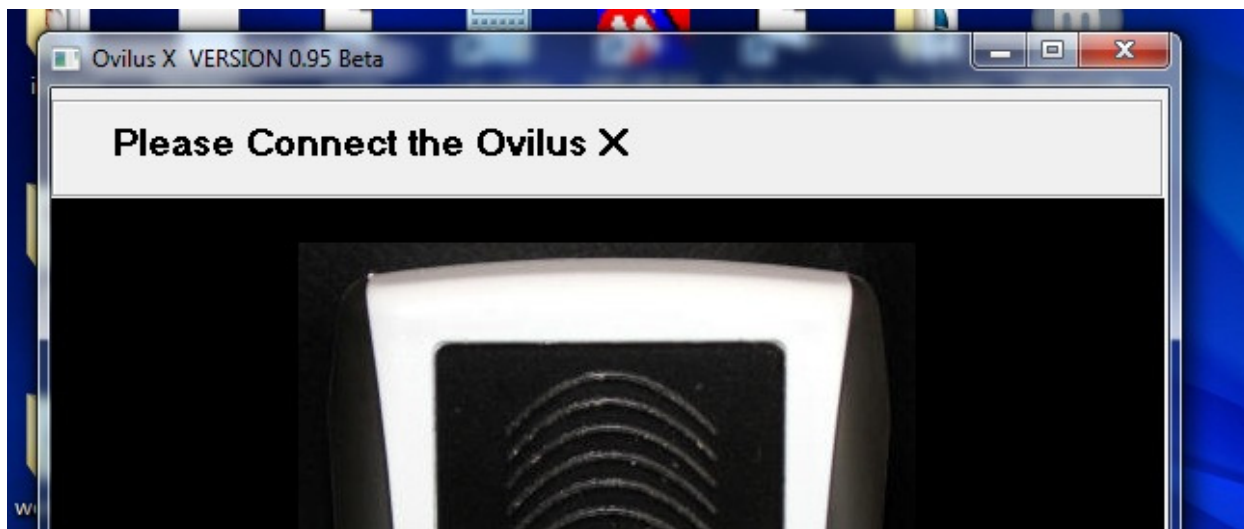
To start locate the windows Icon on your menu bar and click on it



Then Locate the software program installed



Click on the folder then the program to launch the software.

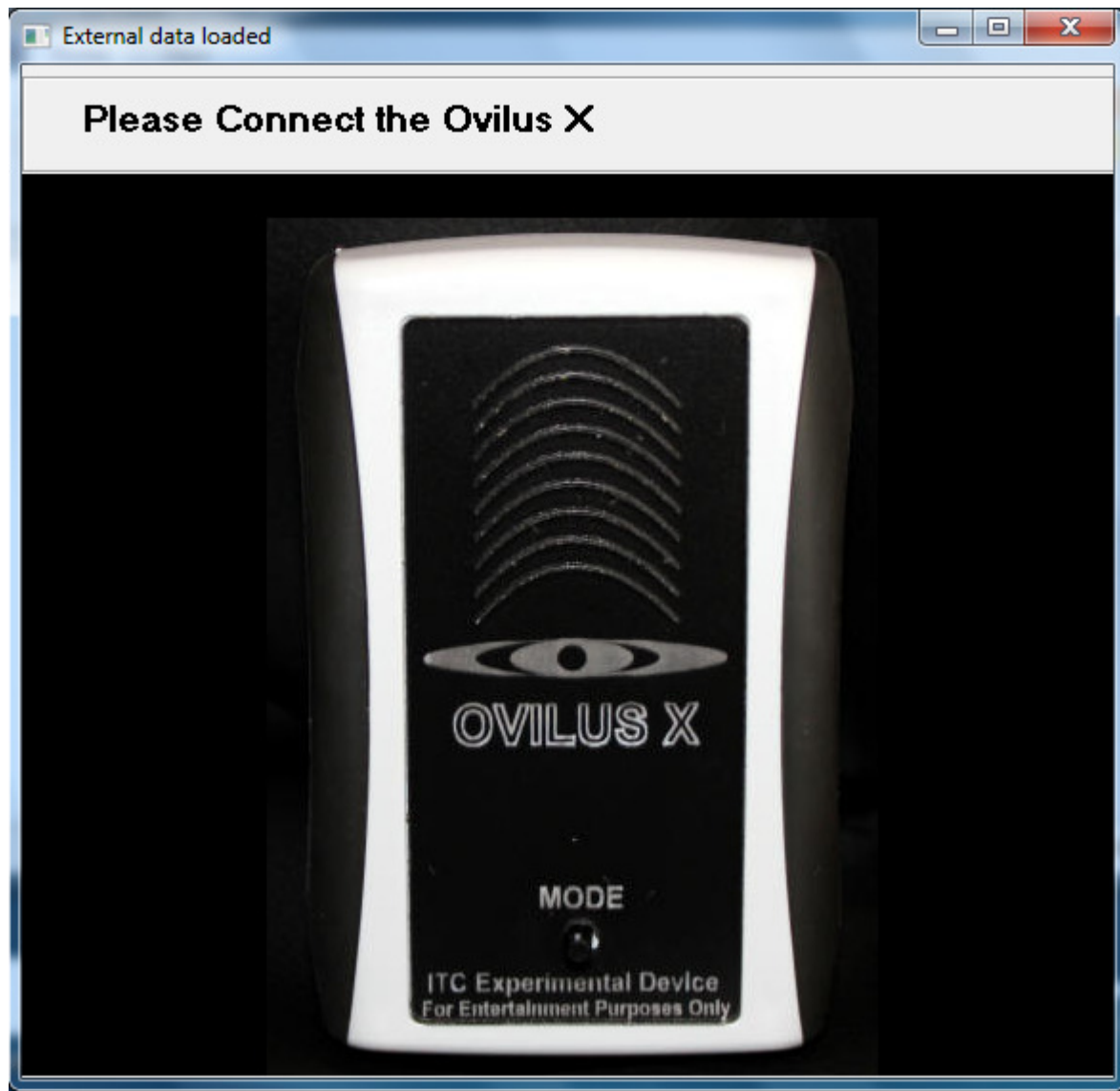


The Software will open and display a picture of the Ovilus X while it's waiting for the Ovilus X to be connected to the PC via the USB Port.

### **Using The Software : Next section**

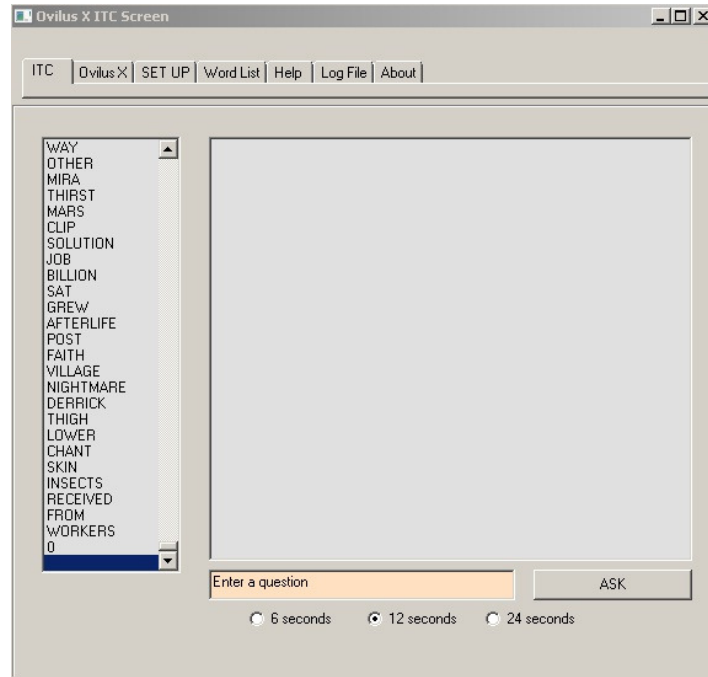
## Using The Ovilus X Software:

Main Screen:



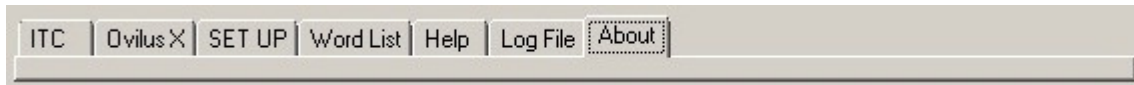
After you have installed the Ovilus X software and started it this screen will appear. Before you plug your Ovilus X into the USB port to use it with your computer make sure the Ovilus is turned off. When using the Ovilus X with the software the Ovilus will receive its Power from the USB port.

Plug in the USB cable to the Ovilus and attach the other end to your computers USB port.



The Main ITC screen should now appear.

The Tab Bar at the top of the screen will allow you to navigate the software.



We will go through each tab the screen it pulls up an each function .

The Tabs are.

**ITC:** Instrumental Trans Communication page based on the Paranormal Puck

**Ovilus X:** Menu Options for using the Ovilus X “Not attached to the computer”

**SET UP:** Change Ovilus speech and sensitivity

**Word LIST:** Review, Change the Ovilus X Internal Word List

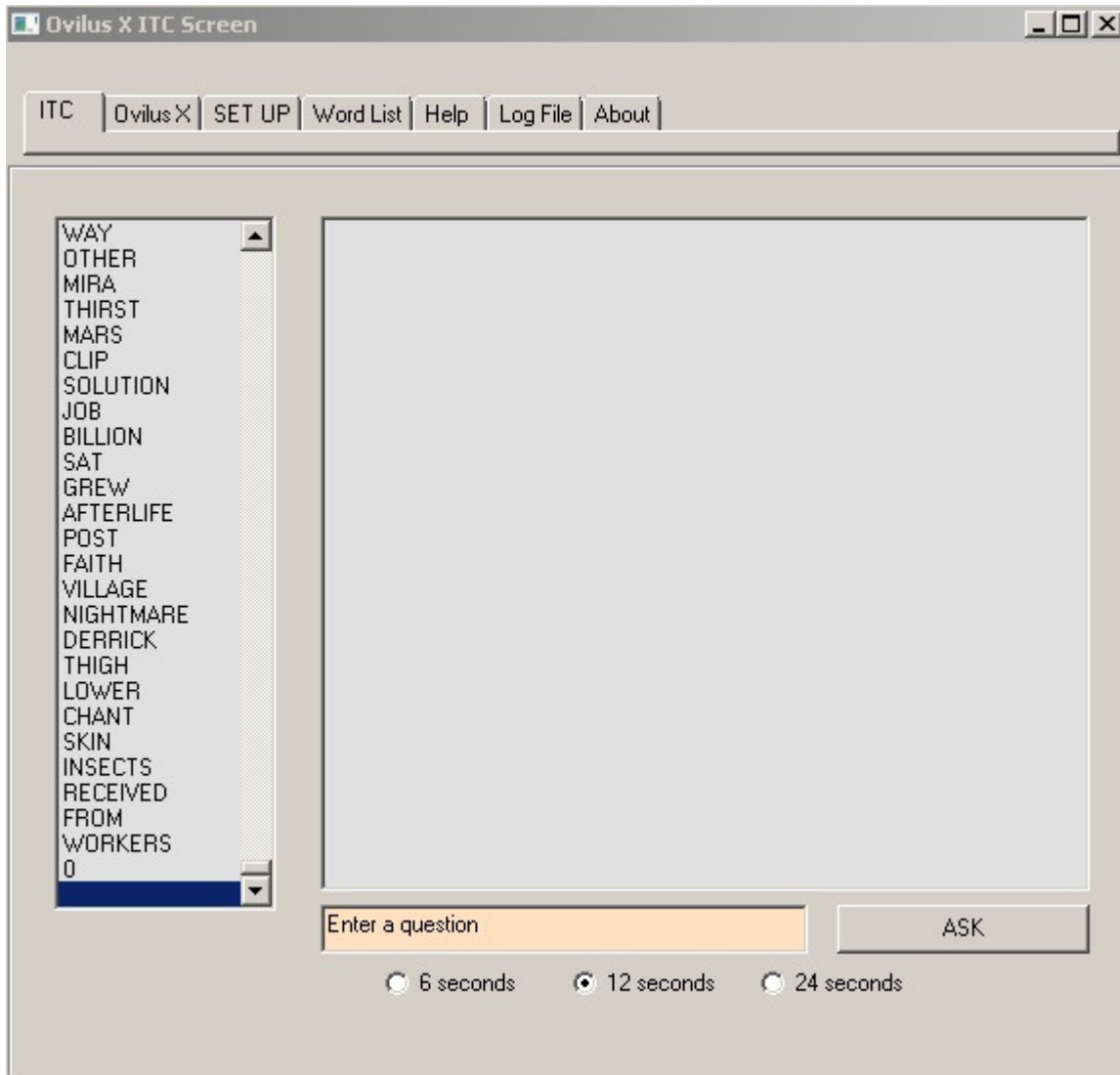
**HELP:** Links to the Ovilus X web sites

**LOG FILE:** Log file for ITC sessions from the ITC Tab

**About:** Internal Information about Your Ovilus X

Now let's look at each tab in depth

## ITC:

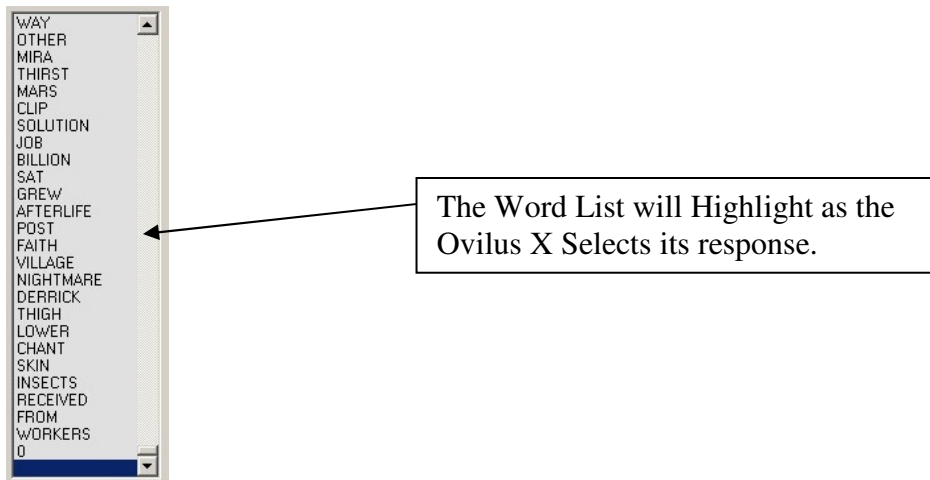
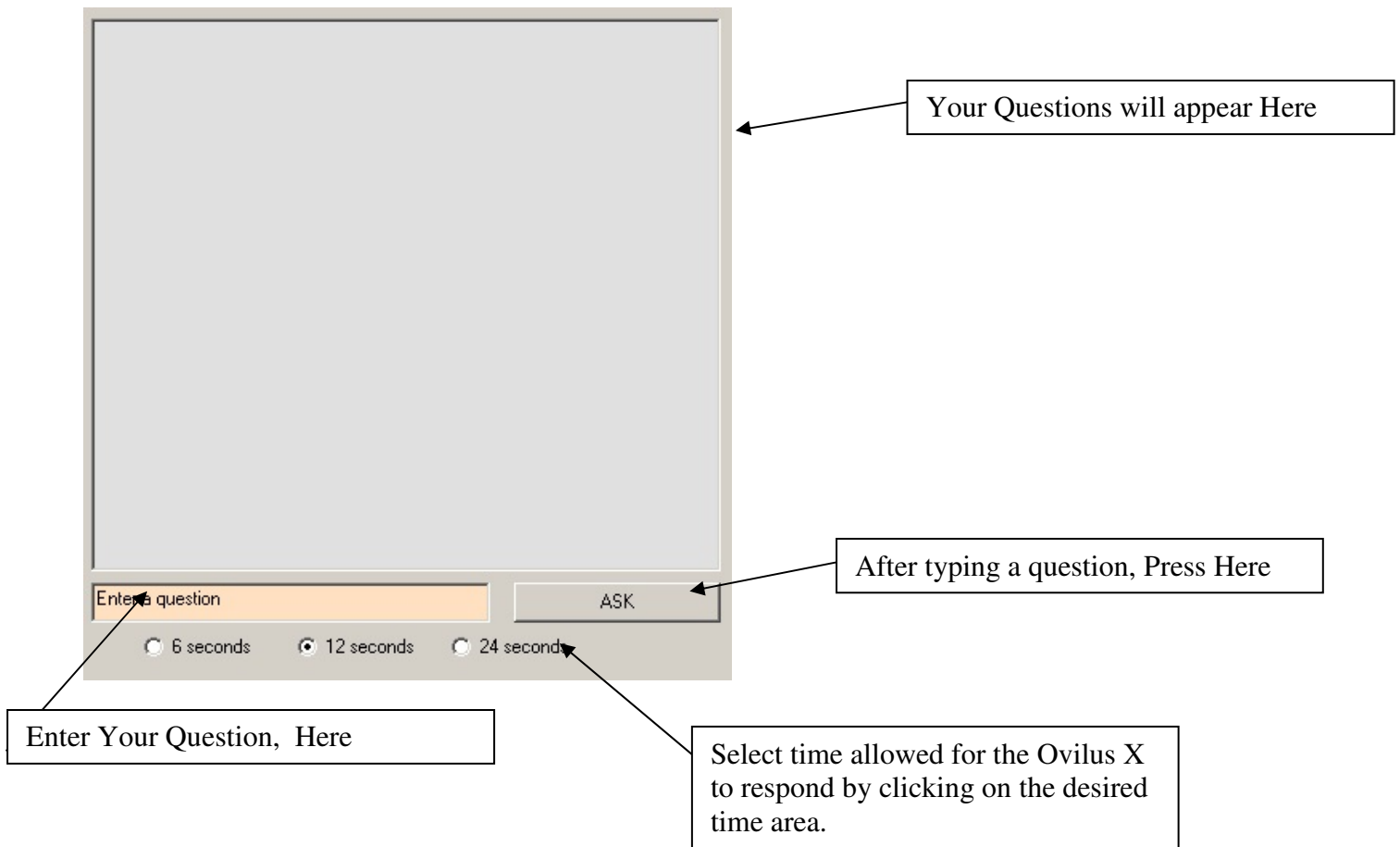


This Screen is designed to act like the Original Paranormal Puck built by

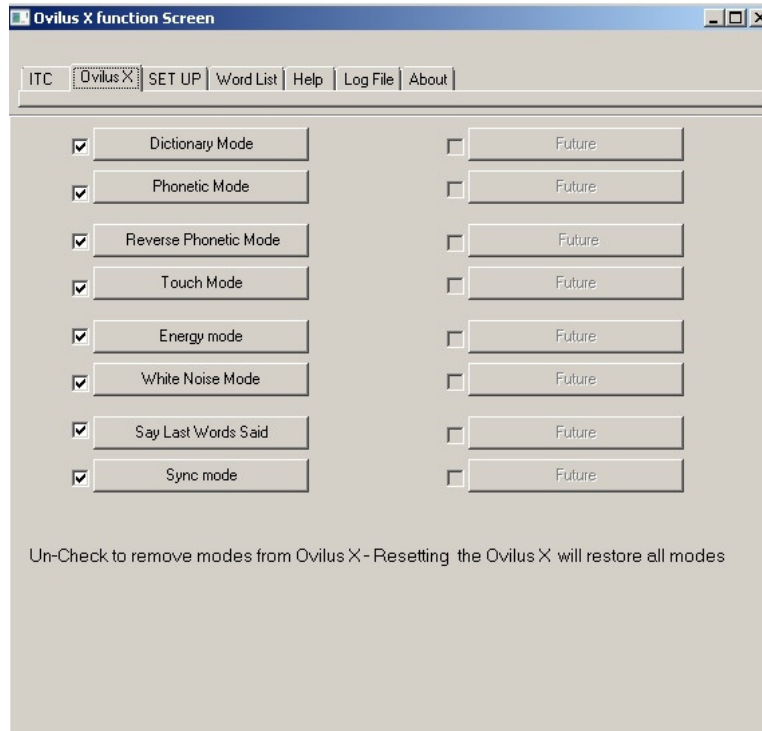
Digital Dowsing in 2006. By entering a question in the Yellow text box and hitting enter or the Ask button Your Question will be displayed on the screen as well as the response from the Ovilus X. These Questions and response can be vied latter in the LOG File. The timed allowed for the Ovilus X to respond can be changed from 6 ,12 or 24 seconds by clicking on the desired time area at the bottom of the screen



## ITC: Main Function Area

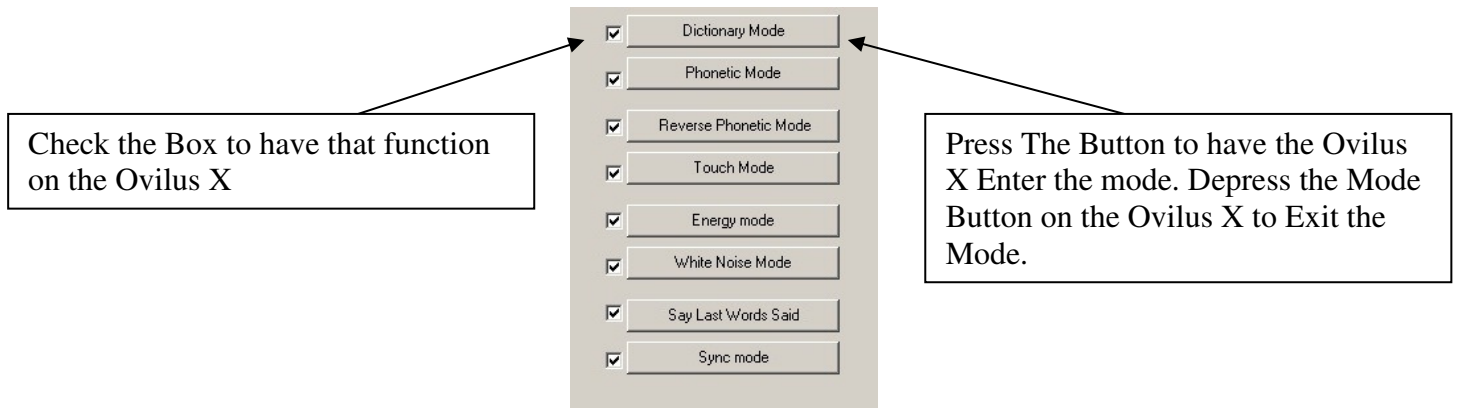


## Ovilus X :

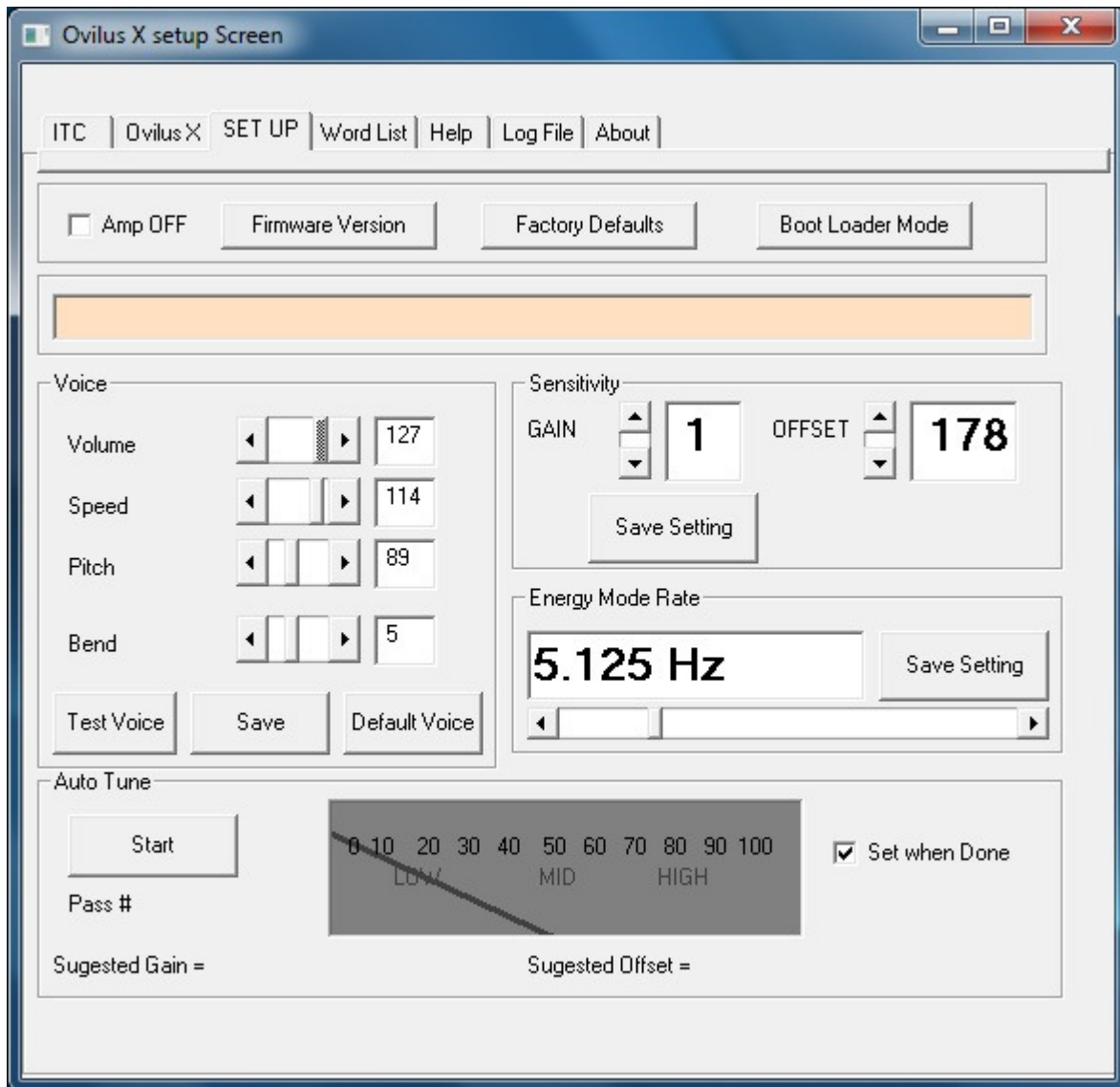


The Ovilus X page allows you to select what options will be used on the Ovilus X  
By checking or Un-Checking . If the Item has a check next to it it will be active on the Ovilus X  
If the item is not checked the Item will not be used on the Ovilus X.

Each Item button will cause the Ovilus X to run that mode “ So you can make sure  
You want it on the Ovilus X or Not.” By Default all Modes are active on the Ovilus X



## SETUP

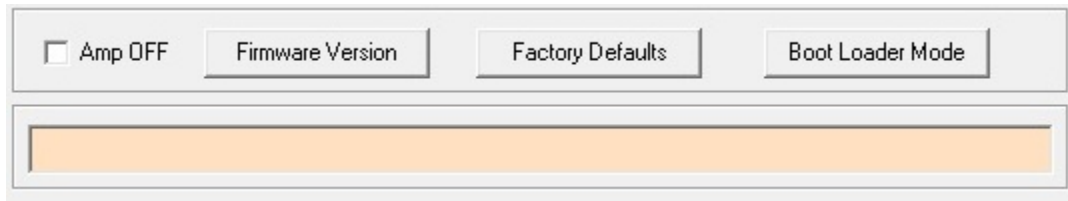


The Setup page allows the user to restore default settings when the Ovilus shipped.

Modify the voice of the Ovilus as to tone Pitch and Speed. Adjust the Gain and Offset.

Also users can set the rate at which the energy Mode coil is pulsed.

## Defaults:



### Amp on / off :

Click Here to turn on or off the Ovilus X Speaker

### Firmware Version:

Click here and the Ovilus Firmware version will appear in the yellow window.

“Firmware is the operating system for the Ovilus X, it’s the internal Software”

### Factory Defaults:

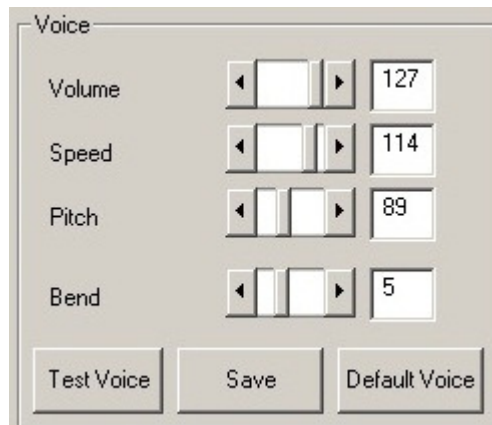
Click here to restore the Ovilus X to the Factory settings when the Ovilus X shipped.

### Boot Loader Mode:

If your Ovilus is running a REV A or REV M firmware this button will force the Ovilus Directly Into the bootloader mode for Firmware updates.

You will need to then start the appropriate bootloader software to install new firmware in The Ovilus. Do not Un-plug the Ovilus X from your PC while attempting a bootload.

**Voice:**



**Volume:**

This may be set from 0 to 127, You may want to use a lower volume when using external speaker to improve clarity.

**Speed:**

This may be set from 0 to 127, You may want to use a slower speed to increase clarity

**Pitch :**

This may be set from 0 to 255, Lower Pitches make the voice more Male 65-90

Female 91-125

**Bend:**

This will change the voicing from a deep-hollow sounding voice to a High-metallic sounding voice. Bends can range from 0 to 15.

**Test Voice:**

Make sure you have turned the Ovilus AMP on “ See Pervious page”

Press to hear the settings you have changes the Ovilus will count to 3

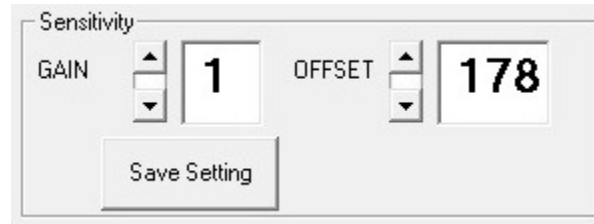
**SAVE:**

Press to save any voice changes you have made

**Default Voice:**

Press to restore the Default Voice

### Gain and Offset:



### Gain:

Increase the gain (1-10) to increase the sensitivity of the Ovilus X if the gain is too high. The Ovilus will tend to talk too much. Too low the Ovilus may not talk at all.

### OFFSET:

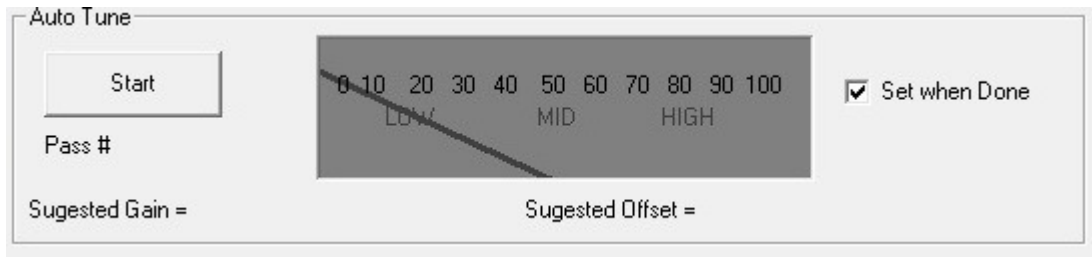
Offset settings are like a filter to reject unwanted triggering of the Ovilus X. If the setting is too low the Ovilus may talk excessively.

### Energy Mode rate:



By changing this slider you can change the frequency the Energy Mode Coil is pulsed at. Make sure you press save when you have the desired rate.

## Auto Tune:

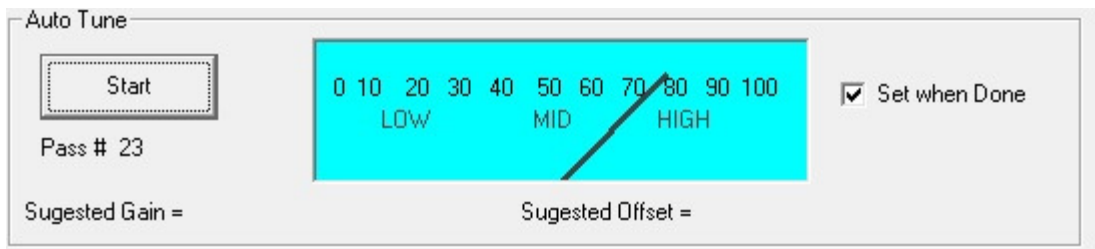


The screenshot shows the 'Auto Tune' window. On the left, there is a 'Start' button, a 'Pass #' field, and a 'Suggested Gain =' label. In the center is a gauge with a scale from 0 to 100, marked with 'LOW', 'MID', and 'HIGH'. The needle is positioned at 0. To the right of the gauge is a 'Set when Done' checkbox, which is checked. Below the gauge is a 'Suggested Offset =' label.

The Auto Tune Section will tune the Ovilus for you automatically setting both gain and Offset at the same time.

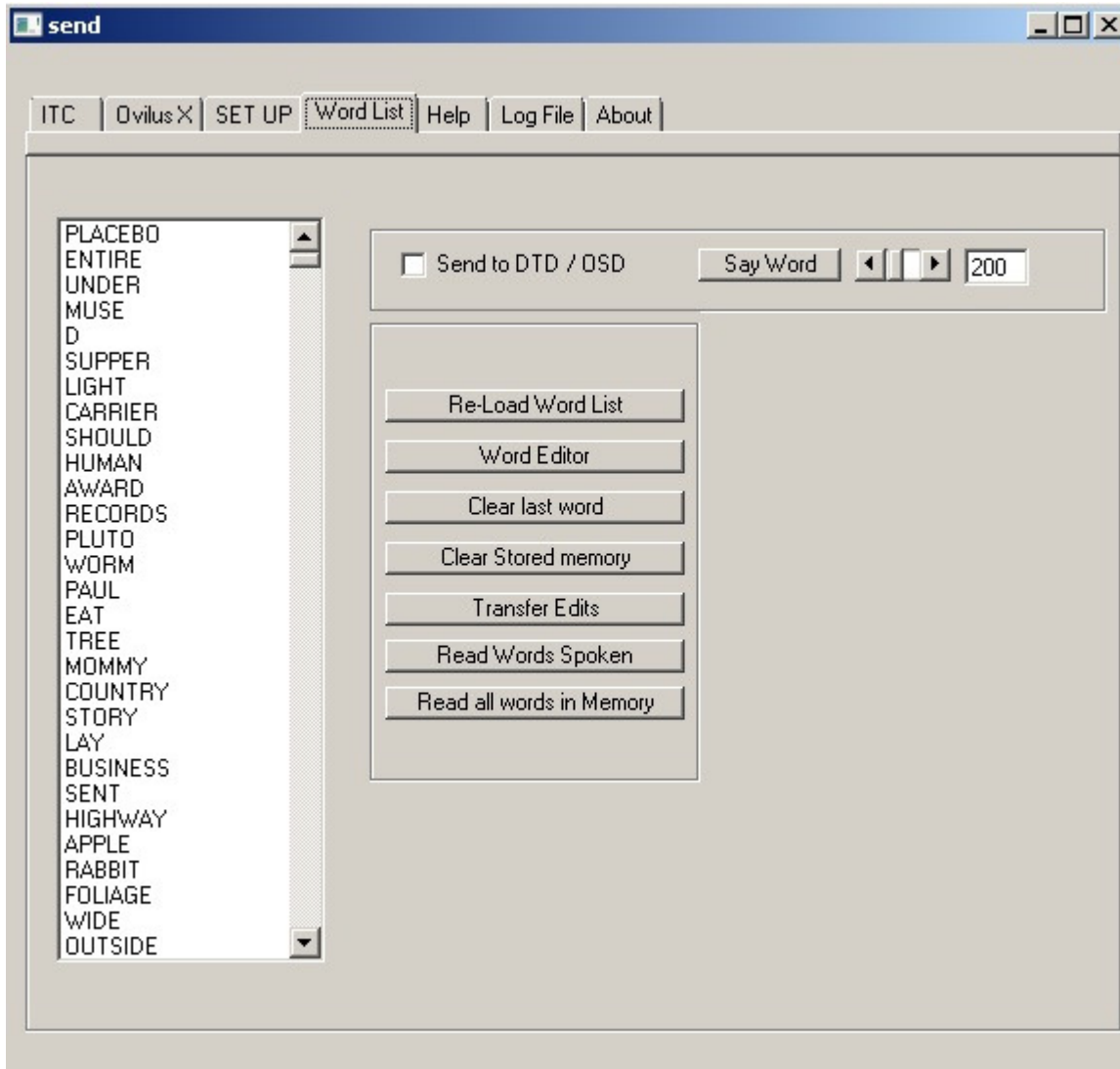
Note the “Set When Done” must be checked or the Auto Tune will only show the suggested Values ....

To run Auto tune Press the Start Button the Tune gauge will change from grey to blue while tuning.



The screenshot shows the 'Auto Tune' window after the 'Start' button has been pressed. The 'Start' button is now disabled and has a dashed border. The gauge is now blue and the needle is positioned at approximately 75. The 'Pass #' field now displays '23'. The 'Set when Done' checkbox remains checked. The 'Suggested Gain =' and 'Suggested Offset =' labels are still present.

## Word List:



This is by far the longest section of the manual dealing with testing and changing the Internal Word List for the Ovilus X and external devices like the DTD or the OSD.

The Ovilus X doesn't store words as Text, they are all stored as phonetic words. These commands that make up the speech. When working with the editor it will take some practice to become proficient at creating new words that sound correct.

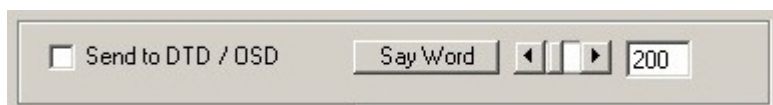
Lets start with the simple parts of the Word List.





The Text List shows all the words stored in the Ovilus in Order form 0 to 2048

Click on one of these words and the Ovilus X will say the word. “Remember to make sure the amp is on” See Setup.



By Checking the Send To DTD / OSD Box any word spoken by click either the word list or The say word button will be sent to a connected device such as a DTD or OSD. These devices. Connect to the Ovilus Via the Data Port using a 1/8 stereo cable.

You can change the slider value and press say word to hear the word based on the List value show to the right of the slider.

## Word List: Buttons



### Word Editor:

This Button will launch the Phonetic Word Editor used to edit or change the existing.

We will go into detail about this page at the end of this section.

### Transfer Edits:

This Button will transfer changes in word list made in the word editor to the saved words in the main program. This way you can use the Ovilus X while making changes to the lists.

### Re-load Word List:

This Button will transfer the word list to the Ovilus X

### Clear Last Word:

This Button Clears the internal word count in the Ovilus X, used in the function say last word said.

### Clear Stored Memory:

This Button will clear the internal memory of the Ovilus X

### Read Words Spoken:

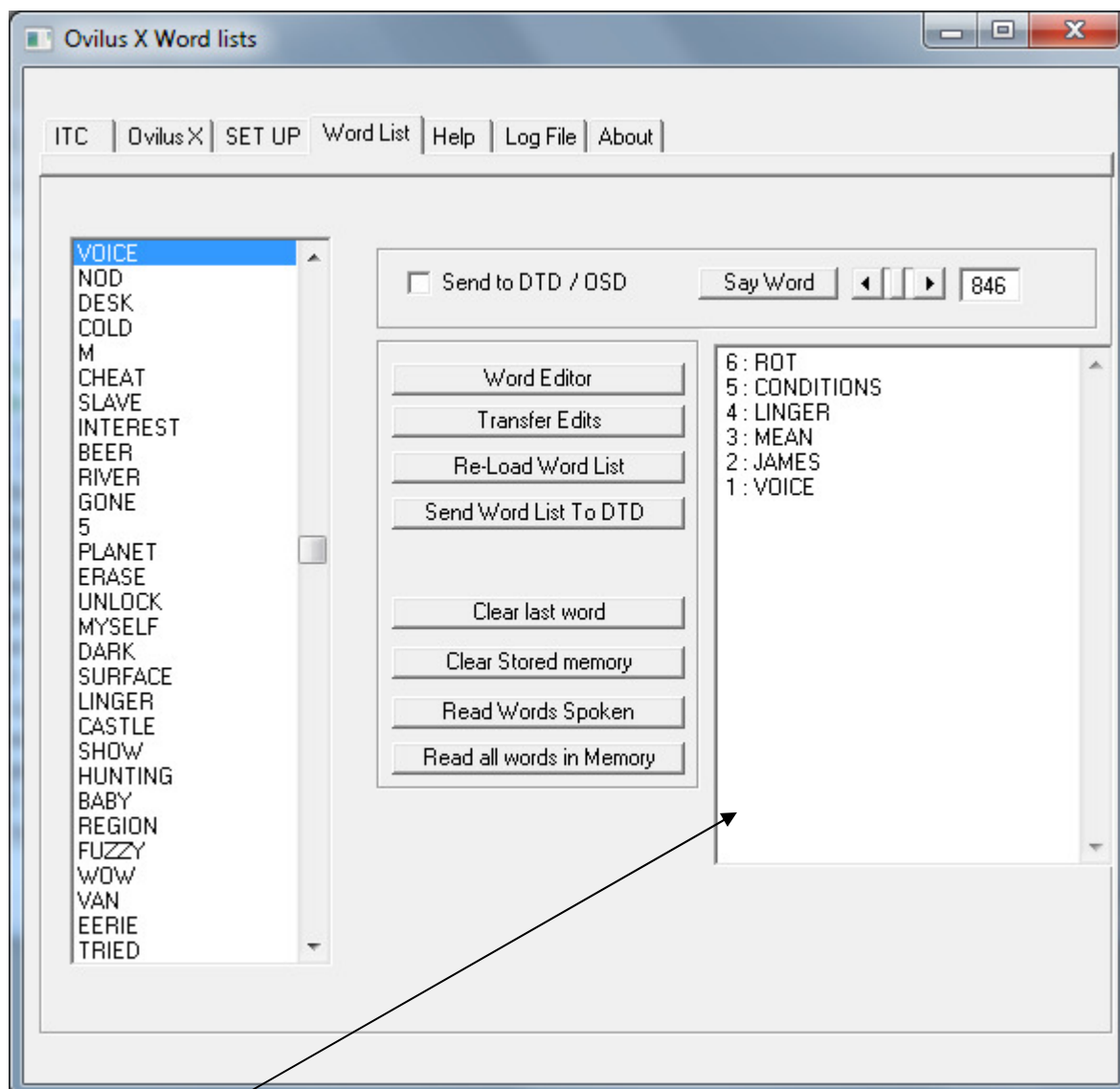
Words from the Ovilus say last word said will appear in a window on the screen,

Blanks, on nothing retuned entries here designate word compounding.

Compounding is when the Ovilus X starts to say one word and finishes with another.

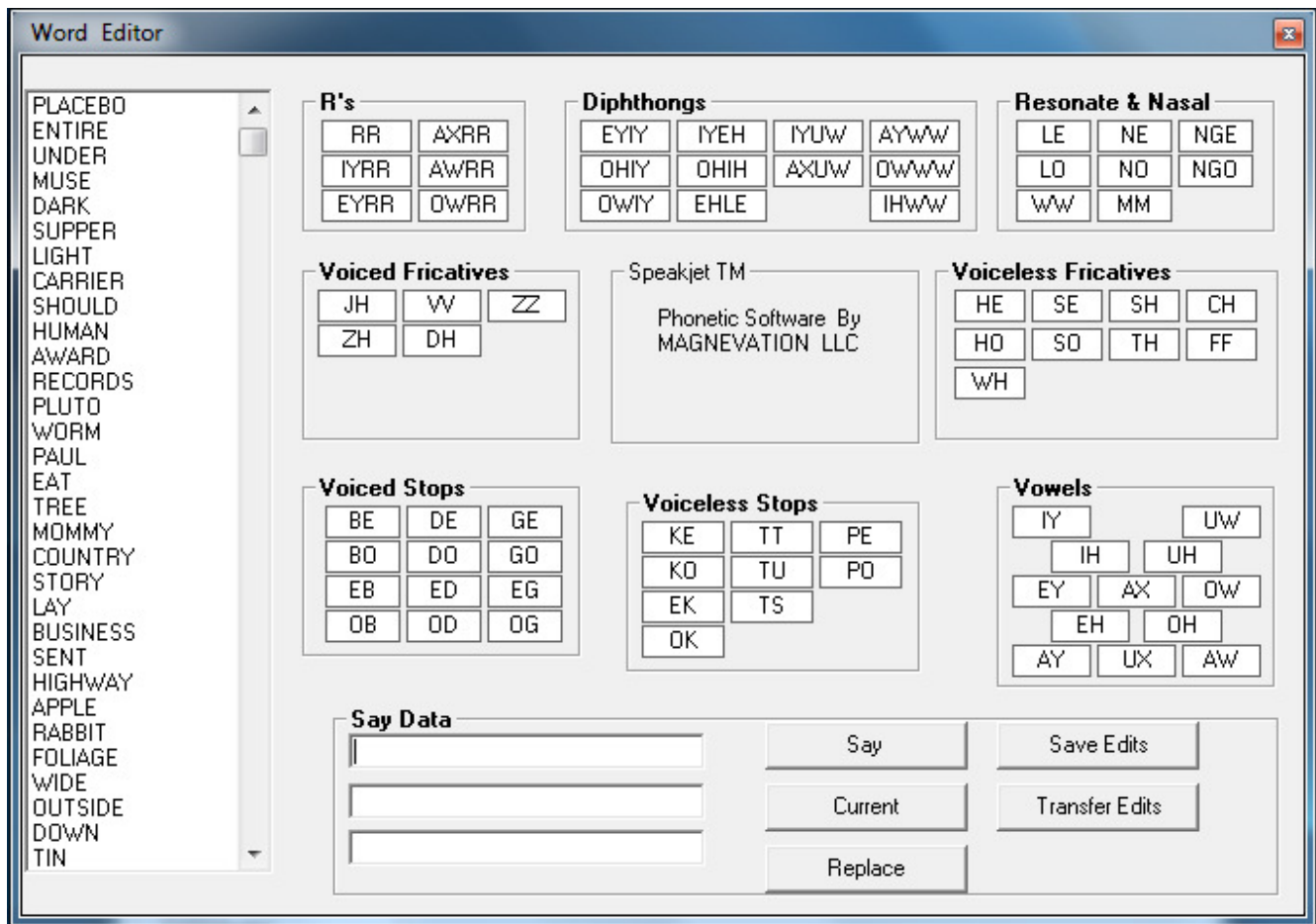
### READ all words in Memory:

This will read all words stored In the Ovilus X memory.



Read All Spoken Words and Read all words in Memory will appear here.

## The Word Editor:



Moving your mouse over the buttons in this screen will give you a brief description of each button. The Editor assists the user in creating a new each word in the list can be edited and or re-written to alter the word or increase the understandability of the speech.

You may work on this list close the program and comeback to it. The Software will keep your work as long as you press the “Save Edits” when done.

### Over view:

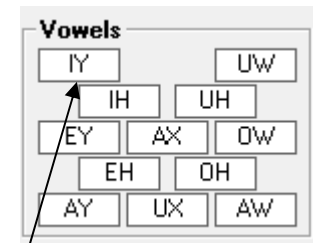
The Ovilus X does not use text, rather it uses a set of codes called phonemes that represent The sounds that make up speech. So we must build a list that has the Text word that we understand And the equivalent that the Ovilus X can understand.

Creating the phonetic words is easy with a little practice. The Editor has sounds grouped that are

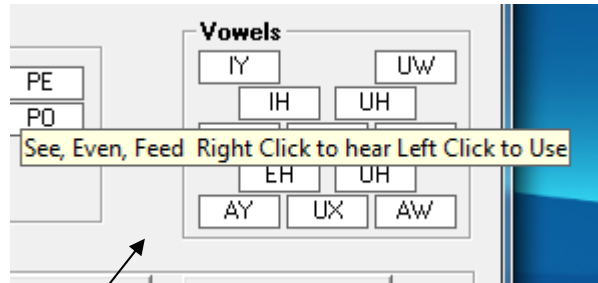
Common such as vowels , R's and more.

Each button represents a sound and the Ovilus Codes for that sound.

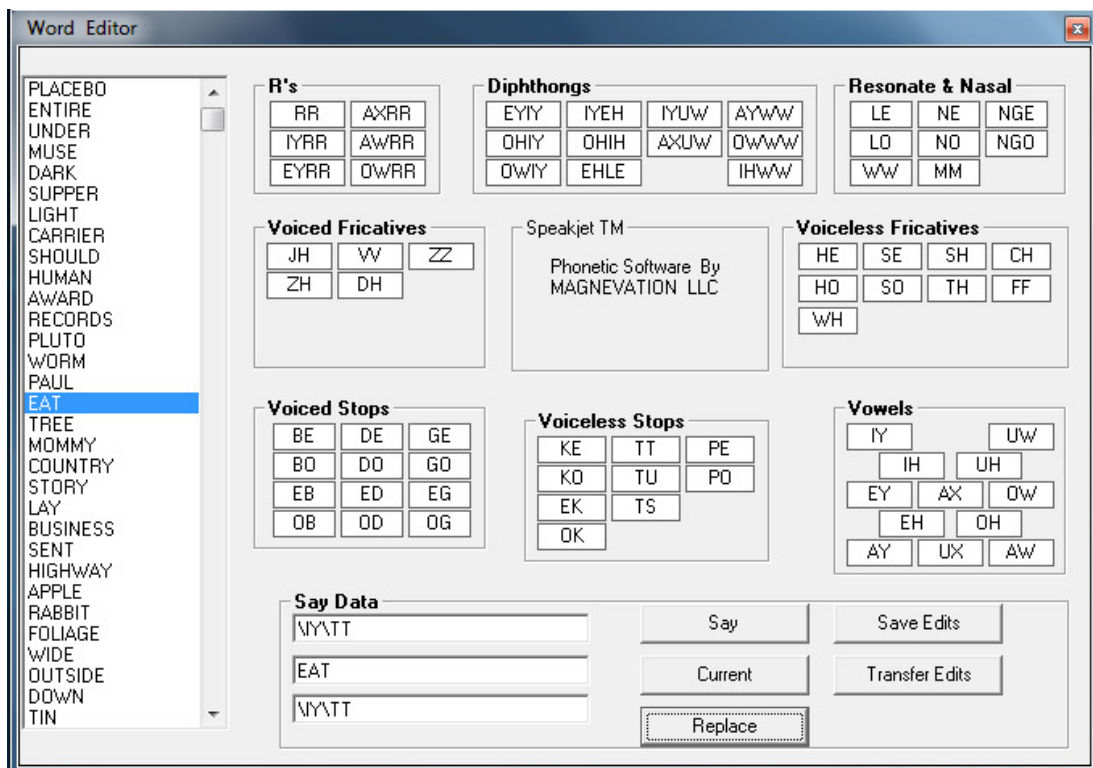
For example if you want to hear what the IY button in the vowels section will sound like right Mouse button click on it the Ovilus will make the sound. This is true for all button in all sound groups. Just Moving the Mouse over the button will pop up a description of what the sound is using like words.



Right Click to Hear the sound



Mouse Over to see what words use it.



Let's create a new word to see how this works.

Copyright 2006 - 2012 Digital Dowsing LLC.. All rights reserved.

This manual May NOT be reprinted, transmitted, reproduced or displayed without written consent of Chapp Inc., or Digital Dowsing LLC.

Start by Clicking in the Test list on the word EAT.

Notice that the word EAT now appears in the Say Data area.

This first line is where we will create the new Phonetic word.

Start by clicking in this box and then pressing back space till the box is empty.

Next Lets change the word EAT to OK. We will start by creating the new phonetic word.

To do this we need the O sound so we select OW from the vowels section.

Click on the OW to put the “O” sound in the empty say data Box.

Notice the \OW is written the \ tells the Ovilus where a sound starts and ends.

Next, Click on the KO to put the “K” sound in the empty say data Box.

Notice the \KO is written the \ tells the Ovilus where a sound starts and ends.

Say Data		
\OW\KO	Say	Save Edits
EAT	Current	Transfer Edits
\YY\TT	Replace	

Now press the Say Button ... Notice it's not exactly right.

Next, Click on the EY to put the “e” sound in the empty say data Box.

Notice the \EY is written the \ tells the Ovilus where a sound starts and ends.

Say Data		
\OW\KO	Say	Save Edits
EAT	Current	Transfer Edits
\YY\TT	Replace	

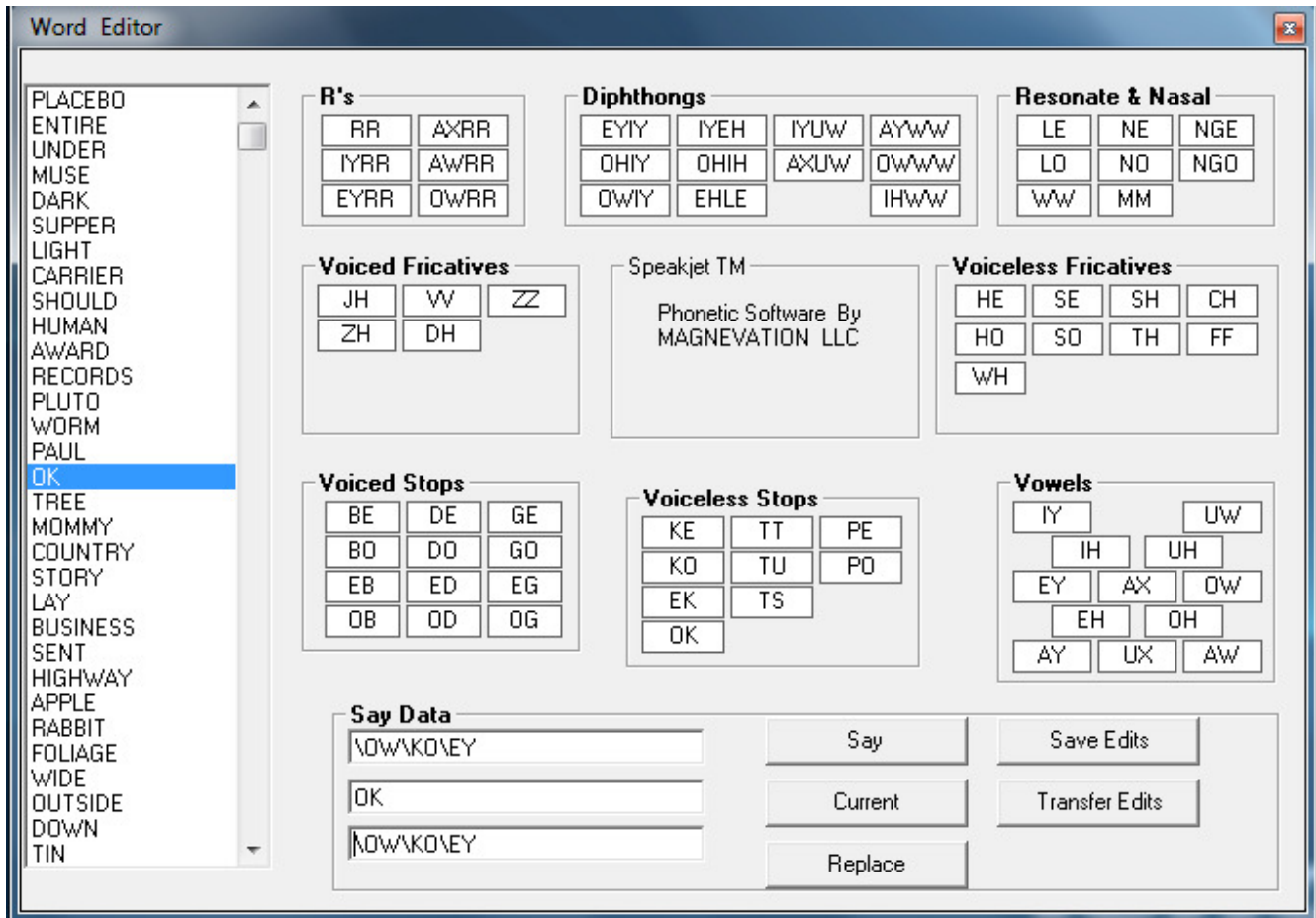
Now Press the Say Button, You'll hear OK. Well the Hard part of changing this word is done.

Now Click in the Box that says EAT use your back space key to delete the word.

Now Type in OK.

Say Data		
\OW\KO\EY	Say	Save Edits
OK	Current	Transfer Edits
\YY\TT	Replace	

Now we need to save our new word to the editors list. To Do this press the Button “Replace”



Notice that the word EAT is no longer in the list and it has been replaced by OK.

At this point you can continue replace or editing the old words. These changes will only stay When you press “ SAVE EDITS “ Now the Editor List is saved.

To make the changes permanent from the editor to the main software. Press “Transfer Edits”.

### Going Further:

If you have made all the edits to you word list. Saved Them and Transferred the Edits.

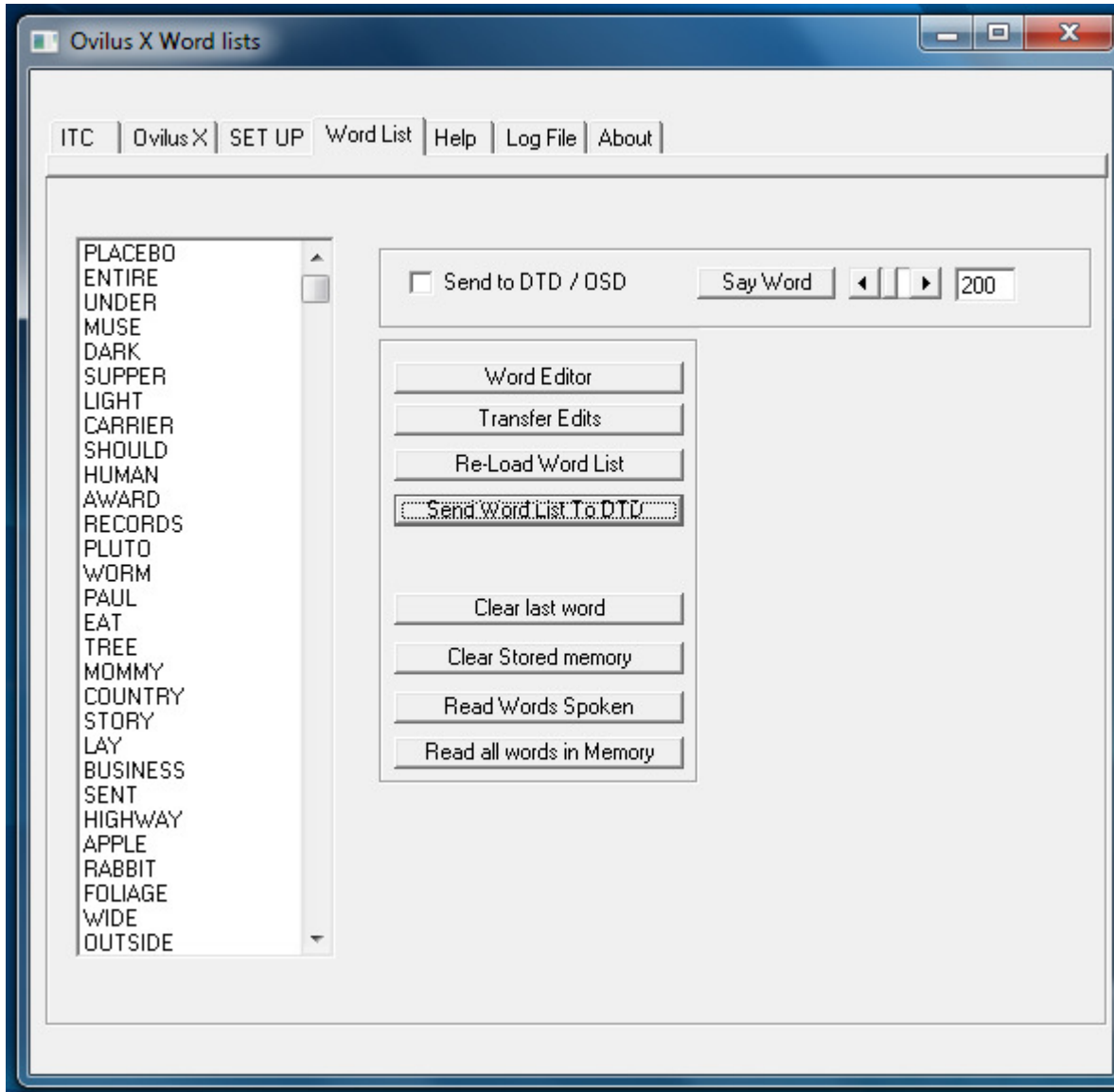
Close the Program, and then re-start it so all the edits are updated.

Now all that needs to be done is transfer the new words to the Ovilus X or your DTD.



## Transferring word Lists

Go back to then Word List Page.



Now Select Re-Load word List, this will transfer the new word list to the Ovilus.

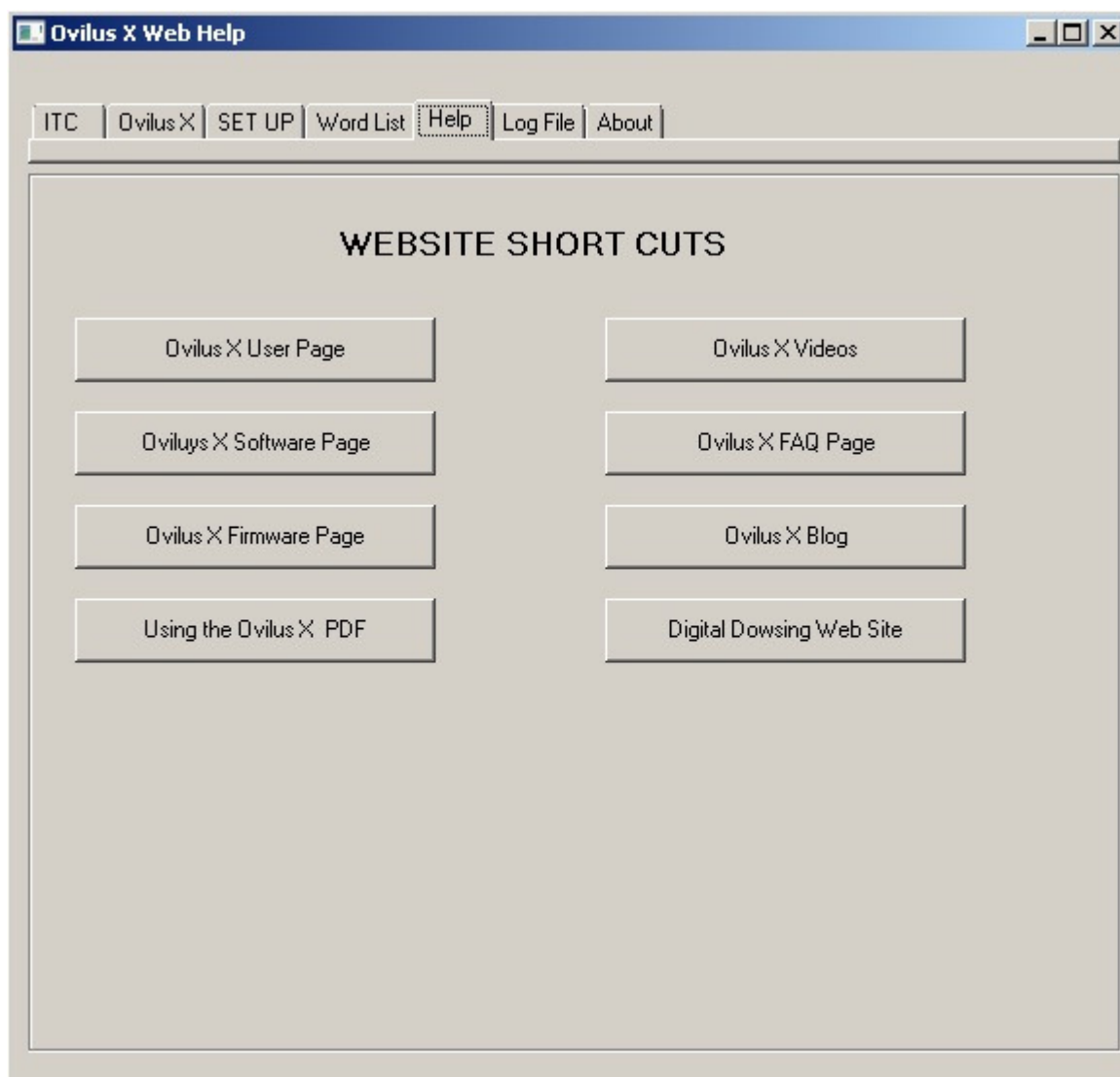
It will take @ 10 minutes to complete. When Done you can click on the word list  
“Make Sure the Amp is on in SETUP” and the Ovilus will now say you new words.

To transfer the Words to the DTD or OSD Press Send Word List to DTD

This will take @ 45 minutes the Screen will tell you when it’s complete.

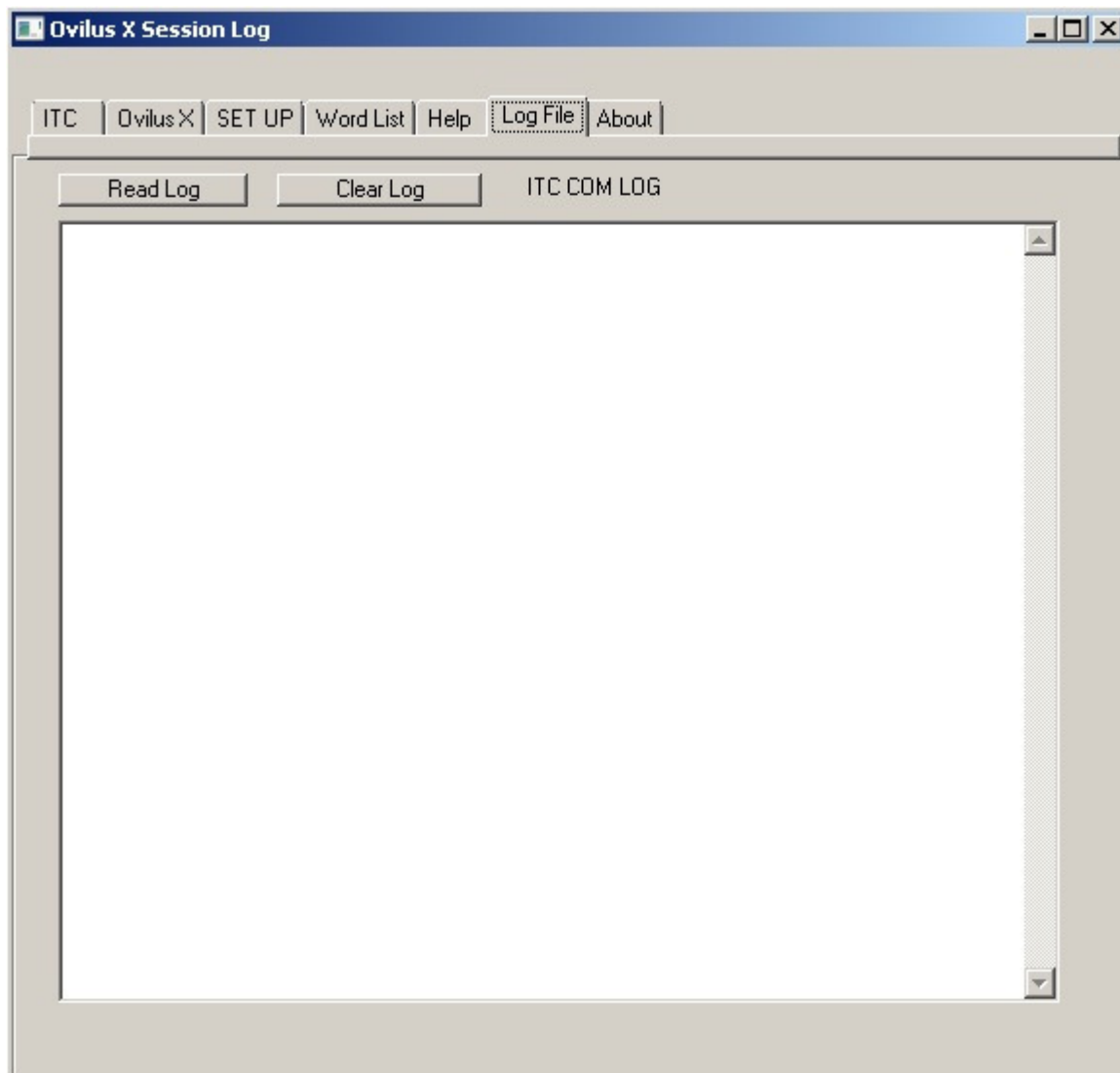
Then Turn Off Your DTD or OSD to Complete the transfer. When Re-started the new word list will be active.

## Help:



The Help page has several Button each will launch your browser and load the information Page from the internet.

## Log File:

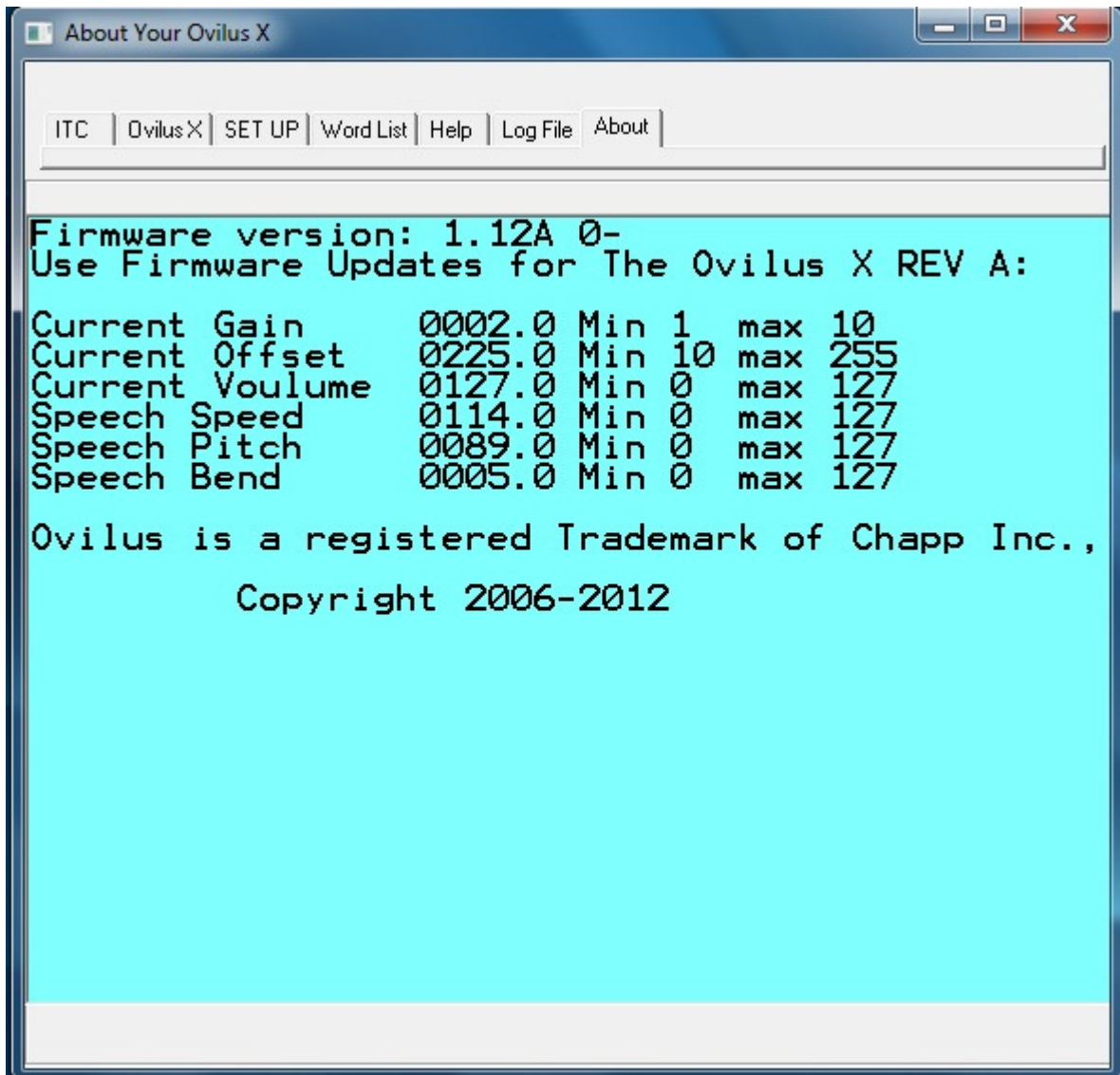


The Log file is the data from the ITC page it's a time stamped record of what was asked and what was the Ovilus X said in the ITC page.

Pressing read Log will load any stored logs from the ITC page.

Press Clear Log will permanently delete the current log file.

## About:



The About tab, pulls up the internal data from the Ovilus X and at a glance tells you Firmware , Gain, Offset and Voice Settings .

It's seems like a lot but really it's a simple system. If your having trouble or just have questions

**PLEASE LET US KNOW**

**[WWW.DigitalDosing.Com](http://WWW.DigitalDosing.Com)**

**Or Email**

**[Help@digitaldowsing.com](mailto:Help@digitaldowsing.com)**

### **Quality and Service**

Digital Dowsing LLC. has made every effort to provide a well designed and quality manufactured product. Each Puck has been tested for function prior to shipping. This test checks inputs and functions. We hope you find our products meet with your satisfaction.

### **Returns**

If you have read this manual and decided that this device *does not* meet your needs for any reason:

- We only accept unused returns for a refund within 7 days of purchase.
- E-mail [help@digitaldowsing.com](mailto:help@digitaldowsing.com) in the Subject line state: "RMA requested"
- Include a brief note stating that you would like to return the device.
- We will E-mail instructions for its return and refund the amount of purchase less shipping charges.

### **Need Help?**

E-mail us at [help@digitaldowsing.com](mailto:help@digitaldowsing.com)

- State the nature of your problem
- Please send picture or drawings if needed.
- Detailed information about the problem.

We try to respond in 24 hours or less Monday – Friday.

Corrections in the manual, Did we miss something ? Have a typo ?

Email Use and let us know what's wrong and on what page. We will try and Incorporate the changes in the next revision of the Manual.